



Annual Report 2024

President's Report • Activity Report
Financial Report • Projects Report

SIF in 2024

€ **64.2** million

of new income in 2024



81%
private funding
19%
public funding

92,918

private donors

1,074

staff members

604

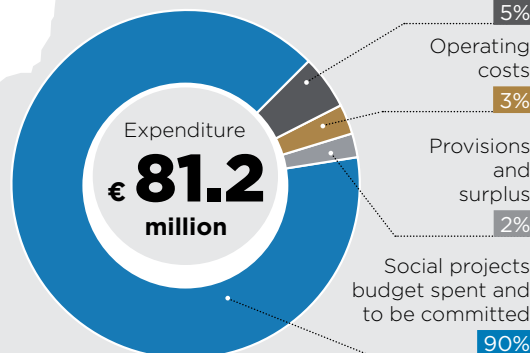
volunteers

22

Project countries

1.4 million

beneficiaries



CONTENTS



PAKISTAN



BANGLADESH



INDONESIA

carbon footprint of

1,495

tons/year of CO2 eq in France

● President's Report	3
● Activity Report	5
● International Projects	7
● Social Mission France	25
● Advocacy	31
● Financial Report	37
● Outlook and Forecast	45
● Acknowledgements	46
● About Us	47
● SIF Governance	49
● External Relations	52





Rachid Lahlou
Founding President

“A year of challenges, solidarity and renewed commitment”

It's my pleasure to share this 2024 President's Report with you; 2024 being a year dominated by a number of particularly critical issues both in France and in many other regions of the world.

The vital support of our private and institutional partners, to whom we extend our warmest thanks, ensured that Secours Islamique France (SIF) was able to strengthen and expand our projects to help the most vulnerable. However, we are only too well aware of all that remains to be done.

A rapidly changing global situation

2024 was a major turning point for humanitarian action. France announced unprecedented cuts to its institutional funding, even as humanitarian crises – conflicts, natural disasters, protracted crises – continue to grow in intensity. At the same time, the United States decided to reduce its international development assistance by up to 90%; a decision that has weakened the entire sector as USAID previously provided 42% of global humanitarian aid.

Although the SIF financial model, which seeks to diversify resources and funding, protects us from the direct repercussions of these decisions for the time being, we cannot remain indifferent to the devastating

impact that they will have on the millions of people who relied on this aid. It is our duty to denounce this situation and defend the quality and integrity of our work.

Non-compliance with humanitarian law remains a key concern, especially for the people of Palestine. The conflict, now a year old, is having dire humanitarian consequences and there is no end in sight. Our thoughts also go out to all the other vulnerable people in Sudan, Yemen, and Lebanon, as well as in Mayotte, severely affected by Cyclone Chido in December.

France remains in the midst of a multi-dimensional social, economic, energy and climate crisis, which is pushing millions of our fellow citizens even deeper into poverty. Access to basic rights (food, water, education) remains unequal, and the gap between government commitments and the situation on the ground continues to grow. To address this, there is a pressing need to promote joint, coordinated and sustained commitments that are properly upheld.



Collective and committed efforts

Remaining true to our principles, SIF has continued to work with the platforms, groups and networks to which we belong, cooperating on initiatives and sharing knowledge. We have actively supported joint campaigns, particularly those led by Coordination SUD, to ensure that our projects can be implemented without discrimination and in accordance with our values.

We again highlighted the extremely urgent nature of the humanitarian situation in Gaza and called for a lasting ceasefire to protect civilians. With regards to the environment, our involvement in the most recent Conference of the Parties on the climate (COP) reflects our ongoing commitment to human development that respects the planet.

Following the drastic cuts announced by France to its Official Development Assistance (ODA), we joined a collective advocacy campaign and took part in a historic demonstration in front of the National Assembly in November to influence the vote on the 2025 finance bill.

We again urge governments to guarantee that humanitarian aid be provided solely on the basis of need, without political or security interference. SIF also took part in the ECOSOC Humanitarian Affairs Segment (HAS) for the first time in 2024, where we reiterated the urgent need for international humanitarian law to be respected, and for safe access to aid and protection for aid workers.

Maintaining collective momentum

In this uncertain global climate, we began a mid-term review of our 2022-2027 strategic plan at the end of 2024, conducting a large-scale consultation with our staff and management bodies and holding a workshop at the General Assembly.

Despite the announced cuts in aid, we have confidence in our teams' ability to adapt and innovate to overcome any potential constraints. We would like to sincerely thank our beneficiaries, donors, partners, volunteers and staff for their unwavering commitment. It is through working alongside them, and thanks to them, that we are able to continue to implement our projects with both solidarity and respect for human dignity.

Now more than ever, SIF will focus on our three pillars of human development, living well together, and respect for the environment in order to help create a fairer, more united and more respectful world.

ACTIVITY REPORT



Mahieddine Khelladi
Executive Director

“2024 was an important year for SIF, both in terms of private donations and institutional funding”

Thanks to a substantial increase in private and institutional funding, we were able to consolidate and develop our projects in all the countries in which we work. However, there were also a range of challenges that we had to overcome, particularly humanitarian crises.

Our humanitarian and social projects

Throughout the year, we were exposed to the dramatic situation in Palestine, where our teams in Gaza have been working under extremely unsafe conditions since the end of 2023. As a result of the bombing campaigns, some of our colleagues and beneficiaries, including children and young orphans, have unfortunately lost their lives. We have of course continued with our emergency response, not only preparing parcels inside the Gaza Strip, but also and especially organising large convoys from Egypt. Within Egypt, we have also supported host communities and Palestinian and Sudanese refugees.

Of particular concern is the situation in Sudan, where our team was unable to return in 2024. In addition to Egypt, SIF has been working in Ethiopia and Chad, which both border Sudan, providing assistance to Sudanese refugees.

We carried out emergency relief operations in Lebanon and Syria, countries which have been destabilised by recent events in the Middle East. We also provided emergency relief in Madagascar, which is extremely vulnerable to the effects of climate change and was hit

by a violent tropical storm in January. In May, I was able to visit our projects in Indonesia, another nation at risk from the impact of the climate crisis

In France, Mayotte was hit by a very strong cyclone in December. This was an unprecedented situation for SIF as, for the first time ever, we deployed a joint team from our 2 operational departments, Mission Social France and International Projects, to help the people of Mayotte.

We also received donor funding to distribute food parcels from our Lyon office for the first time. We continue to grow and strengthen our programmes throughout France. As part of our advocacy work, SIF has published two position papers: *Comment l'eau nous nourrit ? (How Water Feeds Us)* and *Catastrophes, changements climatiques et déplacements (Disasters, Climate Change and Displacement)*. We also participated in a number of networks and events. Highly involved in the One Water Summit process, SIF was the only French NGO to take part in the Riyadh summit in December. I was able to contribute both to this summit and to the World Water Forum held in Bali in June.

Generosity of our donors

2024 was an important year for SIF with regard to the funding we received from both private and institutional donors, which we hope will be long-term. We also hope to strengthen our relationship with our donors, as I was able to do in Italy in October during a World Food Programme Consultation meeting.



The winning team of the 2024 SIF Cup Solidaire women's tournament, held at the Five Marville - La Courneuve sports complex

In addition to its usual fundraising activities, our Communication and Development department again conducted webinars for our donors and organised our solidarity football tournament, SIF Cup Solidaire. The 2024 edition was entitled 'One goal: support vulnerable children' and was sponsored by Jessica Houara, a former player of Olympique Lyonnais, PSG and the national French team.

Environmental challenges

Led by our Green Team¹, SIF continued our efforts to embed our environmental approach, implementing policies and an action plan for our teams in the field and head office. We continued with our internal awareness-raising sessions ('climate mural'), and with assessing our carbon footprint. We also attended COP29 in Baku.

The more frequent climate crises are impacting our work in the field. In addition to helping people meet their basic needs, SIF works to provide them with longer-term support to enhance their ability to cope with future crises: training on improving resource management; capacity-building; retrofitting buildings, etc.

¹ An internal multi-disciplinary team set up to roll-out the SIF environmental policy.

² International Committee of the Red Cross.

³ Social and Economic Committee comprising elected members of staff.

Organisational challenges

The SIF organisational framework is constantly being adapted to take changes in our commitments and experience into account to ensure that our various activities are organised efficiently. We have made good progress on our two key projects: our Management System containing our processes, procedures and operating methods, which has been bolstered by the expansion of our internal control team; and our integrated management software package, the purchasing module of which was launched at head office in December.

SIF continued to roll out our Child Safeguarding Policy in France and, with the help of 58 focal points, in all of our field offices: ensuring child safeguarding measures are included in our procedures, briefing and/or training for over 359 members of staff², providing more general awareness-raising for partners, communities and the children themselves.

The executive board has maintained a good relationship with the SEC³ and ensured that we continue to satisfactorily integrate people with disabilities and maintain a high score on the legal Gender Equality Index (96/100). This is just one part of our commitment to inclusivity, which we highlighted during our Recruitment Forum held in September, attended by no fewer than a thousand people in person and online.

As part of our work towards continuous improvement, we continue to review our management charter and regularly discuss good practices with our managers. In force in France since 2015, the charter was rolled out in all of our field offices on 1st January 2024.

Through our staff, which includes our employees in France and abroad and all of our volunteers, SIF successfully achieved our objectives. We would sincerely like to thank all of you for your professionalism and commitment. Our heartfelt thanks also go out to all of our active donors, who have remained at our side, responding to our appeals for donations.



INTERNATIONAL PROJECTS



INTERNATIONAL PROJECTS

Our International Operations and Programmes Department (DPOI) oversees SIF's activities abroad. In coordination with our local and international partners in Africa, the Middle East, Asia, Europe and the Caribbean, SIF provides support to people affected by disasters (climate-related, earthquakes, flooding, etc.) or conflict. SIF's aim is to ease people's suffering both in emergency situations and, as part of a longer-term approach, to enable them to rebuild their lives sustainably and with dignity.

- The areas in which we work are as follows:
- > **Shelter and accommodation** for vulnerable people by building and rehabilitating shelters, schools, community infrastructure, housing, healthcare facilities, etc.
 - > **Food security and livelihoods** for people affected by the recent increase in food crises by providing food parcels, supporting training, developing income-generating activities, etc.
 - > **Water, sanitation and hygiene (WASH)** (human rights recognised by the UN General Assembly) via boreholes, sanitation facilities, hygiene promotion activities, provision of water storage facilities, etc.
 - > **Education and child welfare** (using the CRBA⁴), in particular the right to decent education and to protection from violence, through programmes to support the most vulnerable children (including children, young orphans and talibés), by supporting educational activities, providing psycho-social support, rehabilitating schools, etc.

⁴ CRBA: Child Rights-Based Approach.



SHELTER AND ACCOMMODATION

€5.2 million



FOOD SECURITY AND LIVELIHOODS

€17.0 million



WATER, SANITATION AND HYGIENE

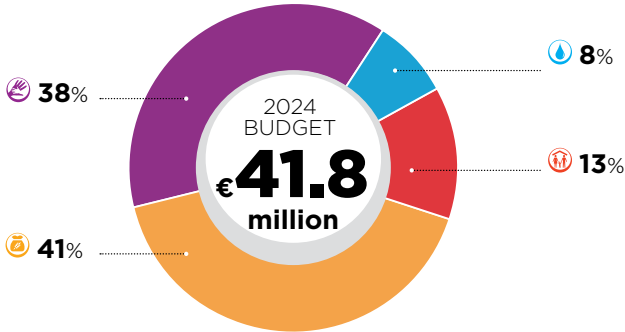
€3.3 million



EDUCATION AND CHILD WELFARE

€15.9 million

Other €0.3 million (Waqf endowments and bequests)





Field office opened in **2022**
 Budget: **€1,456 K**
 including **2%** institutional funding
 Team of **3** expatriate and **28** local staff

Project themes:



In 2024, Burkina Faso experienced a rise in food prices and a deterioration of food security⁵, a situation exacerbated by the country's withdrawal from ECOWAS⁶. At the same time, insecurity in the country led to the displacement of more than 2 million people⁷. Consequently, SIF stepped up our projects to help internally displaced people and host communities in the Cascades region, installing boreholes, distributing water purifying kits and building the capacities of farmers. SIF also continued our partnership with the Islamic Development Bank and the Ministry of Health, which led to 4,000 people with cataracts being screened and having operations.

In Ouagadougou, SIF also supported children and young people in Koranic schools to realise their rights by improving both hygiene conditions and their socio-professional integration.



AFRICA



Field office opened in **2012**
 Budget: **€2,419 K**
 including **35%** institutional funding
 Team of **2** expatriate and **48** local staff

Project themes:



In Somalia, there are an estimated 7 million people in need, 4.3 million of whom are in a situation of acute food insecurity. The country is in the grips of a complex crisis that is being fuelled by armed conflict and successive climate shocks that have displaced nearly 3.5 million people. In response, SIF projects have targeted 42,975 vulnerable beneficiaries, providing livelihood support, improving social cohesion, treating malnutrition and sponsoring orphaned children. We also distributed food parcels during Ramadan and Eid Al Adha. In Kenya, climate crises have exacerbated food insecurity, leaving over 2 million people affected. Millions of children living

in poverty do not attend school. Through our sponsorship programmes, SIF has facilitated access to education for 2,408 children.



⁵ There were around 2.7 million people (11.9% of the population) suffering from severe food insecurity between June and August 2024 (hunger gap). Source: <https://www.worldbank.org/en/country/burkinafaso/overview#1>

⁶ Economic Community of West African States

⁷ <https://www.worldbank.org/en/country/burkinafaso/overview#1>



Field office opened in **2009**
 Budget: **€1,313 K**
 including **30%** institutional funding
 Team of **6** expatriate and **48** local staff

Project themes:



Ranked 13th in the 2024 World Risk Report⁸ of countries most at risk of experiencing natural disasters, Madagascar suffered a number of extreme weather events over the course of the year, which affected the quality of life of the country's population. To address these challenges, SIF continued to develop our access to education, food security and water supply improvement projects to help build the resilience of the most vulnerable communities. This included implementing emergency education measures to ensure children could continue learning, developing farming and business activities, providing support to women, and fostering community engagement.

Forming part of a sustainable approach that is tailored to local requirements, these projects provided assistance to 37,439 people in 2024, including 25,375 children.



AFRICA



Field office opened in **2013**
 Budget: **€1,742 K**
 including **8%** institutional funding
 Team of **1** expatriate and **22** local staff

Project themes:



Following the announcement of the withdrawal of Mali, Burkina Faso and Niger from ECOWAS, the end of the Algiers Accords⁹ and closure of the MINUSMA¹⁰ bases, Mali experienced an increase in conflicts and population displacement in 2024, as well as a restriction on free movement, all of which contributed to a rise in inflation¹¹.

SIF continued our projects in Bamako, Ségou and Mopti. Following the December 2023 closure of a 4-year project co-funded by the EU to support the integration of Koranic schools into the national education system, SIF continued to conduct our education, awareness-raising and advocacy activities using

our own funds in order to consolidate the progress made.

We also organised food parcel distribution campaigns during Ramadan and Eid Al Adha for over 62,000 people and we assisted 1,400 orphaned young people and children.



⁸ WRB_2024_online_12MB.pdf

⁹ This 2015 Accord for Peace and Reconciliation in Mali was signed by the government and separatist groups from the north of the country. Source: https://www.lemonde.fr/afrique/article/2024/01/26/mali-la-junte-annonce-la-fin-avec-effet-immediat-de-l-accord-d-alger_6213138_3212.html

¹⁰ The UN peacekeeping mission in Mali established to support the government with implementing the Algiers Accords and stabilising the country. MINUSMA withdrew on 31 December 2023 at the request of the government in Bamako. Source: https://www.lemonde.fr/afrique/article/2024/01/01/la-minusma-a-acheve-son-retrait-du-mali-annonce-le-secretaire-general-de-l-onu_6208576_3212.html

¹¹ <https://reliefweb.int/report/mali/strategie-du-cluster-protection-mali-2024-2026-version-revisee>



Field office opened in **2017**
 Budget: **€941 K**
 including **21%** institutional funding
 Team of **3** expatriate and **28** local staff

Project themes:



The situation in Nigeria remains critical, with tens of millions of people estimated to be in urgent need of humanitarian aid. The north of the country is facing a number of growing security challenges, which are being driven by armed conflict and an increase in crime. The country has also been hit by a series of floods, bringing the total number of internally displaced persons up to over 1.3 million. According to the government, 26.5 million people are suffering from food insecurity. SIF has therefore continued with our projects, assisting 48,098 beneficiaries from the most vulnerable communities by improving their economic capacities, setting up safe reception centres

to protect women and children, and distributing food parcels during the month of Ramadan and Eid Al Adha.



AFRICA



Field office opened in **2008**
 Budget: **€3,581 K**
 including **11%** institutional funding
 Team of **5** expatriate and **100** local staff

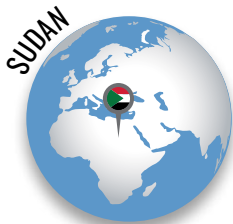
Project themes:



SIF was able to continue our projects in the Dakar, Kaffrine and Tambacounda regions of Senegal despite the political change in the country. Through two projects co-funded by the French Agency for Development (AFD), we worked in 47 Koranic schools supporting the children by improving their living conditions, developing their academic and vocational skills and advocating for their rights (especially by supporting advocacy groups led by young people). SIF also continued our work to improve people's access to water by installing 8 boreholes in Tambacounda. In addition, we helped build the resilience of

households in both urban (Dakar) and rural (Tambacounda) areas by supporting young people and women leading income-generating activity projects in order to promote their autonomy and enable them to meet their daily needs.





Field office opened in **2020**
 Budget: **€356 K**
 including **0%** institutional funding
 Projects implemented through

Project themes:



Sudan has been embroiled in an armed conflict since April 2023, which has had catastrophic humanitarian consequences. 30 million people, i.e. nearly half of the country's population, are in need of urgent humanitarian assistance. Forced displacement has reached unprecedented levels, with 8.8 million displaced people¹² and nearly 3 million refugees in neighbouring countries. Overall malnutrition is alarmingly high, and stands at 13.6 % for children under five. Despite ongoing problems registering our SIF office in Sudan, which prevented us from implementing projects directly in 2024, we nevertheless managed to facilitate the transport of 38 tonnes

of food aid to Darfur that, through our partner PUI¹³, is being used to treat 3,600 children under the age of 5 suffering from severe and moderate acute malnutrition. We also carried out interventions in Chad and Ethiopia (see the Focus on page 13).



AFRICA



Field office opened in **2013**
 Budget: **€1,608 K**
 including **19%** institutional funding
 Team of **3** expatriate and **38** local staff

Project themes:



Chad is suffering from a water crisis that has led to water scarcity and the drying up of some watercourses in a number of the country's regions. On top of that, the country has to deal with severe flooding each year caused by heavy rainfall and rising river levels, which results in the displacement of thousands of people, the loss of human life and the destruction of vast expanses of farmland¹⁴. In response, we launched the ESPOIR project in 2024 to improve access to drinking water and sanitation facilities for more than 12,000 people affected in N'Djamena. In addition, we distributed 150 hygiene kits and essential household

items, thereby helping to improve health conditions and prevent disease. Our ongoing educational projects in the Lac region and capital city have also provided support to 1,171 children.



¹² Sudan Humanitarian Needs and Response Plan 2025 - Executive Summary (December 2024) - OCHA.

¹³ Première Urgence Internationale.

¹⁴ <https://www.unocha.org/publications/report/chad/chad-floods-ocha-situation-report-no-1>

Focus on sub-Saharan Africa

Access to drinking water: a humanitarian emergency

In sub-Saharan Africa, climate hazards, such as prolonged droughts, exacerbate the vulnerability of communities. Increasing water scarcity leads to health, food and security crises that particularly affect women and children, as the task of collecting water often falls on their shoulders. The lack of water infrastructure compounds these inequalities, exposing millions of people to waterborne diseases.

In Chad, this crisis is particularly severe. In 2024, 6 million of Chad's total 18.1 million inhabitants were reported as being in need of humanitarian assistance¹⁵, with 4.1 million of these people in urgent need of drinking water. Furthermore, as of 16 December 2024, there were nearly 722,103 displaced people in the border regions, the main areas hosting Sudanese refugees. There were 127,000 in Wadi Fira province alone, where 85% were women and children.

To address this urgent situation, SIF launched an initiative to provide portable and self-contained water purifiers. These water purifiers helped provide 14,000 refugee beneficiaries in Milé camp (Wadi Fira) with access to safe and clean water. Compact and



lightweight, each purifier can treat 200 litres of water per day, eliminating pathogens and impurities. These water purifiers have helped strengthen the resilience of communities by reducing the risk of disease and facilitating access to this vital resource.

¹⁵ Revised Humanitarian Response Plan / UNOCHA – October 2023

Key figures

- **6 million** were reported to be in need of humanitarian assistance
- of whom **4.1 million** were in urgent need of drinking water
- **14,000** beneficiaries

AWATIF SYAM MAHAMAT,

A Sudanese refugee and mother of six children, who has been in Milé camp since 2024.

“We sincerely thank SIF for addressing our concerns about water. Getting water has become a priority, and a necessity, as we have had serious issues accessing drinking water since our arrival in camp Milé. Finding water to drink is a daily struggle for the hundreds of thousands of families who mainly live in this camp.”





Field office opened in **2017**
 Budget: **€30 K**
 including **0%** institutional funding
 Projects implemented through partners

Project themes:



People that live on ‘chars’, sandy islands created through sedimentation along the rivers of Bangladesh, are some of the country’s most marginalised and vulnerable communities. They frequently suffer from disasters such as flooding and erosion, which can often result in the displacement of entire communities overnight. The government considers it pointless to construct physical infrastructure, such as healthcare clinics or schools, as they can be washed away in a very short space of time. Consequently, many children living on the chars are without access to decent education.

To address this situation, SIF built three modular primary schools and provided teaching materials to 27 other schools, reaching a total of 3,850 children, in 2024 through our local partner Friendship Bangladesh.



NORTH AFRICA, NEAR EAST, ASIA



Field office opened in **2022**
 Budget: **€661 K**
 including **0%** institutional funding
 Projects implemented through partners

Project themes:



There are 30 million people living below the national poverty line in Egypt, and nearly 4 million people living in extreme poverty¹⁶. The country is also host to more than 820,000 refugees and asylum-seekers, who rely heavily on humanitarian aid.

In 2024, SIF launched projects in Egypt to provide assistance to refugees from Sudan and Gaza, as well as to host communities. With our local partner, Meshwar, we distributed food parcels for Ramadan and meat for Eid Al Adha to 8,600 and 10,800 families respectively.

SIF and Meshwar also rehabilitated the homes of 60 disadvantaged families and provided blankets to 5,000 Egyptian families, and to Gazan and Sudanese refugees, for the winter.



¹⁶ <https://reliefweb.int/report/syrian-arab-republic/syriaturkey-earthquakes-situation-report-7- march-8-2023>



Field office opened in **2018**
 Budget: **€370 K**
 including **0%** institutional funding
 Projects implemented through partners

Project themes:



Indonesia is one of the most vulnerable countries to natural disasters. To help improve people's resilience to these disasters, in 2024, SIF and our partner YKMI¹⁷ launched a disaster risk reduction project targeting 7,500 people. The aim of this project is to provide communities and schools in 4 villages of Central Sulawesi with the tools, knowledge and risk management plans they need to prepare for and recover more quickly from natural disasters. SIF and YKMI also provided food aid to 4,700 families during the month of Ramadan and to 2,790 families for Eid Al Adha.

In the summer of 2023, the Indonesian government approved SIF's request to open a field office in the country, therefore we focused our efforts in 2024 on setting up and developing this office.



NORTH AFRICA, NEAR EAST, ASIA



Field office opened in **2016**
 Budget: **€667 K**
 including **1%** institutional funding
 Team of **1** expatriate and **12** local staff

Project themes:



In this intermediate, pre-post emergency period, there are still 1.1 million internally displaced Iraqis who rely on humanitarian aid¹⁸.

In 2024, SIF continued to focus our efforts on improving the livelihoods and resilience of these vulnerable IDPs.

Through our sponsorship programme, 300 children and young people were able to continue their education, and we helped 27 female guardians to launch income-generating activities. With the help of local farmers and small businesses, SIF delivered food parcels to 1,500 families during Ramadan and meat parcels to 1,346 families for Eid Al Adha to help improve food security.

SIF also implemented a project in the south of the country (Muthanna) to help 1,230 people by promoting farming and other sustainable livelihoods, which was funded by CDCS¹⁹ and launched in partnership with ACF²⁰ and TGH²¹.



¹⁷ Yayasan Kemanusiaan Madani Indonesia

¹⁸ OCHA, 2024: <https://www.unocha.org/publications/report/iraq/iraq-humanitarian-transition-overview-2024-june-2024-enarku>

¹⁹ The French Ministry for Europe and Foreign Affairs' Crisis and Support Centre

²⁰ Action Contre la Faim

²¹ Triangle Génération Humanitaire



Field office opened in 2008
Budget: €26 K
including 0% institutional funding
Projects implemented through partners

Project themes:



Although relatively stable compared to other countries in the region, Jordan nevertheless has its own set of challenges. The country hosts the second largest number of refugees per capita worldwide. Refugees and vulnerable host communities struggle to meet their food needs: around 53% of Jordanians and 76% of refugees are food insecure²². In 2024, through our local partner ARDD²³, SIF distributed food aid during Ramadan to host communities and 400 Syrian refugee families in 4 districts²⁴. In addition to helping reduce their vulnerability, this food aid is particularly appreciated during the month of Ramadan and helps build social cohesion

among the target communities. SIF also partnered with the Jordan Hashemite Charity Organization (JHCO) to deliver humanitarian aid to Gaza.



NORTH AFRICA, NEAR EAST, ASIA



Field office opened in 2012
Budget: €1,344 K
including 14% institutional funding
Team of 2 expatriate and 16 local staff

Project themes:



Since September 2024, the humanitarian situation in Lebanon, already affected by years of economic crises, has been exacerbated by the intensified armed conflict in the region. As a result, there has been an increase in violence, large-scale population displacement, and a rapid deterioration in living conditions

In response, SIF implemented two emergency projects distributing basic necessities and hot meals in Beirut and in the south of Lebanon. In 2024, we distributed meals and parcels to 55,300 beneficiaries through these projects, and during Ramadan and Eid Al Adha.

With support from AFD, SIF also continued our project to promote the vocational empowerment of 540 young Lebanese, Syrian and Palestinian women. In addition, we continued to improve access to education for 250 children by providing them with grants.



²² WFP, 2023: <https://www.wfp.org/countries/jordan>

²³ Arab Renaissance For Development and Democracy.

²⁴ East Amman, Mafraq, Irbid, and Zarqa.



Field office opened in **2019**
 Budget: **€843 K**
 including **0%** institutional funding
 Projects implemented through partners
 and a team of **3** expatriates.

Project themes:



In 2024, SIF continued our relief activities in response to the earthquake that hit Morocco in September 2023. With CDCS²⁵ funding and in conjunction with our partner SANAD, SIF provided essential assistance to the people affected in Taroudant province. Over 5,500 families received food parcels, cooking, hygiene and shelter kits. There are also 5 water points undergoing rehabilitation. Committed to supporting children, SIF and SANAD rehabilitated 12 schools. We also provided psychosocial support, awareness-raising on the rights of the child, and winter clothes to more than 500 children and their families. Through our sponsorship and food

security programmes, we supported 200 children and their families, fostering access to education and ensuring their well-being. In addition, 1,770 families received food parcels for Ramadan, and we provided 972 households with meat parcels for Eid Al Adha.



NORTH AFRICA, NEAR EAST, ASIA



Field office opened in **2008**
 Budget: **€4,523 K**
 including **47%** institutional funding
 Team of **4** expatriate and **362** local staff

Project themes:



In Pakistan, economic fragility, recurrent climatic shocks and growing insecurity are hampering development. There are 20.6 million people in the country in need of humanitarian assistance, 3.1 million of whom are Afghan refugees and more than 1.2 million are IDPs²⁶.

In 2024, SIF provided assistance to more than 106,000 people in 24 of the country's districts. We rehabilitated classrooms and latrines in 45 schools for the benefit of 14,343 schoolchildren, 13,000 of whom received daily meals with the support of the WFP²⁷. SIF also improved the food security of nearly 7,000 households through the distribution of food parcels. In addition, with funding from UNHCR²⁸,

our teams supported the vocational training and income-generating activities of over 4,000 people, including Afghan refugees. Finally, we helped construct more than 4,800 disaster and risk reduction facilities and 270 water supply facilities.



²⁵ French Crisis and Support Centre.
²⁶ ECHO, 2024: https://ec.europa.eu/echo/files/funding/hip2025/echo_-as_bud_2025_91000_v1.pdf
²⁷ World Food Programme.
²⁸ United Nations High Commissioner for Refugees.





Field office opened in **2008**
 Budget: **€10,988 K**
 including **3%** institutional funding
 Team of **2** expatriate and **50** local staff

Project themes:



In Palestine, decades of conflict and instability, which worsened in 2024, have deprived more and more of the population of their rights²⁹. In 2024, 2.1 million people in Gaza relied on vital humanitarian aid³⁰. SIF provided support to more than 270,000 people. In the West Bank, there was a significant deterioration in the security situation, particularly in the refugee camps³¹.

SIF launched a project to protect 300 children and their families in three refugee camps³², and we continued to provide education and well-being support to 668 sponsored children.

We also distributed 556 food parcels during Ramadan and 971 meat parcels for Eid Al Adha. In addition, 427 farmers were trained on good farming practice (PALGAP³³) with the support of SIF and the AFD (also see the Focus on page 23).



NORTH AFRICA, NEAR EAST, ASIA



Field office opened in **2008**
 Budget: **€6,748 K**
 including **49%** institutional funding
 Team of **4** expatriate and **120** local staff

Project themes:



The humanitarian situation in Syria, already dire due to 14 years of conflict, deteriorated further in 2024 as a result of intensified regional fighting. According to United Nations estimates, 16.7 million Syrians were in need of humanitarian assistance in 2024.

In response, SIF continued our UN agency-funded multi-sector projects to best meet the needs of the most vulnerable communities. In 2024, these projects provided assistance to 598,007 people, including through public and private infrastructure and access to education projects, as well as through food parcel distribution campaigns. Following the fall of the

regime in December, and the initial escalation of the humanitarian crisis, SIF teams continued to carry out our projects and interventions to respond to the most urgent needs.



²⁹ OCHA, December 2024: <https://www.unocha.org/publications/report/occupied-palestinian-territory/reported-impact-snapshot-gaza-strip-24-december-2024-1500>

³⁰ OCHA, December 2024

³¹ OCHA, December 2024

³² Balata and Askar camps (Naplous governorate) and Noor Shams camp (Tulkarem governorate)

³³ Palestinian Good Agricultural Practices



Field office opened in **2019**
Budget: **€867 K**
including **4%** institutional funding
Team of **2** expatriate and **28** local staff

Project themes:



Already affected by 9 years of conflict and an economic crisis, Yemen continues to suffer from a major humanitarian crisis. With 4.8 million internally displaced persons, i.e. an increase of 45% in just 5 years, Yemen has the fifth highest number of displaced persons in the world³⁴. According to the United Nations, 49% of Yemen's population were food insecure in 2024.

To meet the most urgent needs of people displaced by conflict, SIF worked to improve food security and livelihoods as part of a CDCS-funded emergency project.

We also distributed food parcels during Ramadan and Eid Al Adha. In 2024, these projects provided support and assistance to more than 13,146 beneficiaries.



³⁴ HNRP 2025 Yemen <https://reliefweb.int/report/yemen/yemen-humanitarian-needs-and-response-plan-2025-january-2025>





Focus on Palestine

Emergency interventions in Gaza

Since the start of the war in October 2023, more than 45,000 Palestinians have lost their lives and 1.9 million people have been displaced³⁵. Disruption to food systems and the delivery of aid has plunged the entire population into acute food insecurity³⁶. To help address this dramatic situation, SIF provided immediate food aid to our sponsored families, as well as to other displaced families. Working with Osman Consulting and PARC³⁷, SIF was able to reach more than 13,500 displaced families in Rafah, Khan Younis and Deir Al-Balah governorates. In addition, to help people meet their food needs during the month of Ramadan, SIF distributed food parcels delivered from Egypt to 10,000 displaced households in Deir Al-Balah and Rafah governorates. We also provided meat parcels to nearly 9,800 families in 22 camps in Khan Younis and Deir Al-Balah governorates for Eid Al Adha. Thanks to Farmamundi, JHCO and aid deliveries from DG ECHO³⁸, SIF was able to bring 38 tonnes of therapeutic foods into the country, which were then distributed to 9 healthcare centres in Gaza with support from PARC. This food was given to 35,972 children, 8,359 pregnant women and 3,239 breastfeeding women who had just given birth, all of whom are the most severely affected by the food security crisis.



Via PARC, SIF also distributed drinking water and hygiene kits, and rehabilitated toilets. Meanwhile, shelter cleaning campaigns were organised via BLDA³⁹. All of these interventions were carried out in an extremely difficult environment. With the UN stating that Gaza has become “the most dangerous place in the world for aid workers”⁴⁰, SIF would like to express our most sincere gratitude for all the efforts made by our team in Gaza in 2024.

³⁵ OCHA, December 2024 ³⁶ OCHA, December 2024 ³⁷ Palestinian Agricultural Relief Committee ³⁸ Directorate-General for European Civil Protection and Humanitarian Aid Operations ³⁹ Beit Lahia Development Association ⁴⁰ OCHA, December 2024

Key figures

- **Nearly 36,000** children under received medical treatment to tackle malnutrition
- SIF distributed food aid parcels to more than **220,000** Gazans
- **Nearly 5,000** children continued to be sponsored and received psychological support from our on-site SIF teams.

Nariman, SIF team member.⁴¹ Our living conditions are inhumane

“*In Gaza, hunger is everywhere. The beneficiaries received these meat parcels as if they were treasure: this foodstuff is extremely rare and so very expensive! This was therefore a very important campaign, providing not only food but also moral support: Gazans feel as though they have been forgotten; it does them a world of good to feel that there are people wanting to help them ...*”

⁴¹ <https://www.secours-islamique.org/don-crise-humanitaire-gaza-palestine>

SPECIFIC PROJECTS

Sponsorship projects



22,431

children supported by the sponsorship programme



10,463

orphans via individual sponsorship

11,968

via participatory sponsorship



Iraq, Kenya/Somalia, Lebanon, Madagascar, Mali, Pakistan, Palestine, Senegal, Morocco.

Budgets and project themes

€10,966 K



Ramadan



275,356

food parcel beneficiaries

2,000

gifts given to vulnerable children



Indonesia, Iraq, Kenya/Somalia, Lebanon, Mali, Nigeria, Pakistan, Palestine*, Senegal, Turkey, , Syria, Burkina Faso, Turkey, Morocco, Yemen...

€3,471 K



Eid Al Adha



423,417

meat parcel beneficiaries

5,800

gifts given to vulnerable children



Burkina Faso, Indonesia, Iraq*, Kenya/Somalia, Lebanon, Madagascar, Mali, Nigeria, Pakistan*, Palestine*, Senegal*, Chad, Yemen...

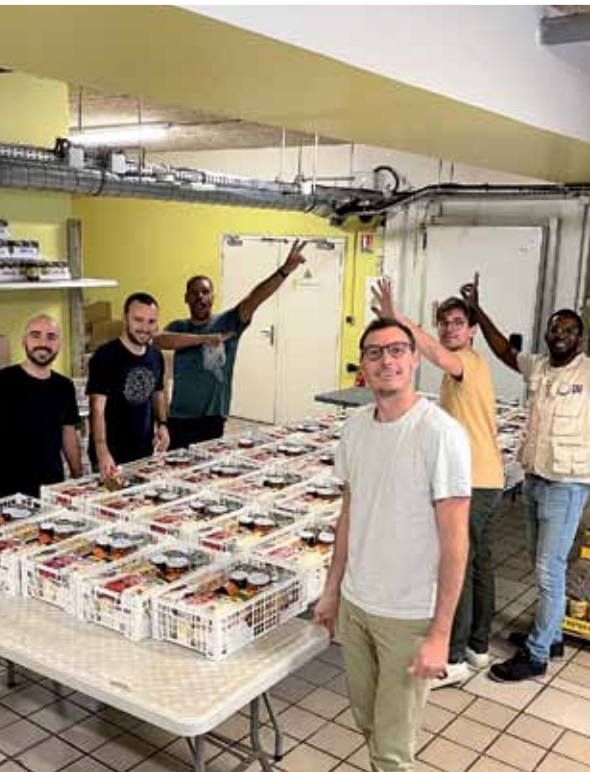
€3,807 K



^{*)} Countries in which we distributed gifts for Eid, as well as food parcels.



FRANCE SOCIAL MISSION



FRANCE SOCIAL MISSION

In an increasingly uncertain socio-economic environment, SIF's Social Mission France teams work to tackle insecurity and exclusion.

The main groups targeted by SIF's support services, assistance and activities are people in precarious situations, families with or without children, the homeless, and socially isolated women. These services initially take the form of **outreach, emergency assistance and social services**.

As meeting basic needs such as food and accommodation is not always enough to get each person back on their feet, we also run **socio-cultural** activities to maintain or recreate positive links between beneficiaries, professionals and volunteers.

To address the ongoing challenge of increasing insecurity, we are setting up new offices and launching new services and activities to better meet the needs of the people we support.



SOCIAL EMERGENCY

€ **3.1** million
2024 budget



SOCIO-ECONOMIC SUPPORT

€ **244** K
2024 budget

Social patrols

78
homeless patrols

Shelter (MAB)

8,760
overnight stays for homeless women

Day centre (CAJ)

11,360
services provided to homeless people

Address service

518
people provided with a mailing address

Tables du Ramadan visits

43,392
meals served

Epi'Sol

63
families in difficulty supported

91 ESSONNE

The Massy Women's Shelter (MAB)

Every night between 17:00 and 09:00, the MAB emergency shelter provides accommodation to 24 women referred by the SIAO⁴² and hosts them for one week on a renewable basis. Over the course of 2024, we provided 246 women with meals and bathroom facilities, etc. for a total of 8,760 overnight stays. With financial support from DDETS 91⁴³, we were able to extend our opening hours during winter to provide the women with shelter 24 hours a day.

The Massy Day Care Centre (CAJ)

The Massy CAJ provides a range of services for the homeless: meals, snacks, showers, laundry facilities, and hygiene kits.

In 2024, we provided 848 people, including 595 new beneficiaries, with 8,325 meals, 1,207 laundry services, and 1,828 showers.

A social worker provided support to beneficiaries not already registered with other social services to help them claim or reclaim their benefits, including state medical aid (AME), top-up health insurance (CSS), and earned income support (RSA), etc.

Address Service

In 2024, this service enabled 518 people of no fixed address (including 84 new beneficiaries) to receive their mail, with a total of 5,157 letters being received and distributed by SIF.

45% of our address service beneficiaries were being housed by a third party, 32% were homeless or living in squats, 13% were living in social housing with no postal service, and 9% were in other types of housing situations.



Our social worker was able to support 354 of these people, helping them to complete their benefit claims (CMU, AME, etc.).

Cultural and Recreational Activities

SIF further supports the people that use our services by offering them the opportunity to take part in cultural and recreational projects and workshops to boost social inclusion. In 2024, we conducted 26 socio-linguistic workshops, and SIF beneficiaries helped plant a shared garden as part of World Environment Day. We also held 3 celebratory meals, one in April (118 participants), another in June (197 participants) and the third in December (134 participants). In addition, we arranged for 45 people to go on a daytrip to the beach at Deauville. Lastly, we organised 12 afternoon teas (cooking workshops). All of these workshops provide opportunities to socialise that help brighten people's difficult day-to-day lives.

We also held monthly meetings with the people we support to improve the quality of the services we provide in our various facilities.

⁴² Service Intégré d'Accueil et d'Orientation (SIAO) – Samu Social (Integrated Reception and Referral Service)

⁴³ Direction Départementale de l'Emploi, du Travail et des Solidarités de l'Essonne (DDETS)
(Essonne Departmental Directorate for Employment, Work and Solidarity)

93 SEINE-SAINT-DENIS

The solidarity grocery shop - Epi'Sol

Our solidarity grocery shop, Epi'Sol, sells quality products at affordable prices. The grocery shop sells food and hygiene products at a price equivalent to 30% of their retail value. Beneficiaries are supported by a social worker. In 2024, this grocery shop supported 63 households, i.e. 70 men and 123 women.

Other socio-economic workshops were also held.

Social patrols

Since 2009, we have been going out on regular social patrols, meeting vulnerable people living on the street in Seine-Saint-Denis.

In 2024, our teams conducted 78 social patrols, meeting and providing guidance to hundreds of beneficiaries. During the coldest times of the year, we reinforced our patrols by extending our patrol times and distribution campaigns, especially hot meals, in order to better protect vulnerable people. Over the course of the year, we distributed 1,916 food kits, 2,370 full meals, 116 winter kits, 30 sweaters, 160 duvets, 50 pairs of shoes, 80 coats, and 132 hygiene kits.

Emergency and one-off food parcels

In 2024, we distributed 162 emergency and one-off food parcels to people, most of whom have no resources. They received support via a social assessment, which also provided them with a much-needed opportunity to talk and be heard.

The Livry-Gargan shelter

The Livry-Gargan sports hall hosted 19 women over the winter period. Our teams provided them with social support and help with obtaining longer-term accommodation. All of these women were successfully rehoused at the end of the Cold Weather Plan period.

Solidarity dinners

Thanks to the commitment of our volunteers and in partnership with the Maison des Solidarités in Saint-Denis, 2,295 meals were served three times a week over a 5-month period to socially isolated people in 2024.

Counselling centre

Each week, SIF runs a walk-in counselling centre that is open to everyone living in the department of Seine-Saint-Denis. In 2024, 146 people used this counselling centre and were provided with social and administrative support, with our teams either helping them to claim benefits (CAF, AME, CMU, RSA), or referring them to the organisation best-placed to assist them. We also supported people with their applications for residence permits and asylum.

Food parcels

SIF distributed 3,023 food parcels in 2024. These parcels were provided twice a month to people in need who were referred to us by their social workers, as well as to students at the University of Seine Saint Denis. These parcels contained both dry products, including milk, oil, rice, etc., and seasonal fruit and vegetables.



OTHER DEPARTMENTS AND SEASONAL PROJECTS

The Panier Solidaire in Lyon

The team in our Lyon office distributed 112 tonnes of food through their Panier Solidaire campaign. A total of 26 distribution campaigns were carried out to address the food insecurity of people in difficulty. 525 households were provided with food parcels, with 4,745 parcels distributed in total (with the same households receiving a food parcel more than once). Each parcel contained basic food items, including milk, oil, flour, pasta, rice, grains, as well as fruit and vegetables, to help households create full and balanced meals.

The Lyon resources centre

SIF improved social ties between inhabitants and promoted overall integration within the host country. 229 people attended French language or IT training courses.

SIF also worked to improve people's self-esteem, with 86 people benefiting from our social clothes bank and hairdressing salon. In addition, 39 beneficiaries were able to exchange ideas at the women's discussion group that we created to provide a safe environment for free expression. A public letter-writer helped 19 people with their administrative correspondence. Emergency food parcels were provided to 57 families suffering from food shortages.

Tables du Ramadan

Our community restaurant in Saint-Denis served hot meals to more than 1,200 people every evening over a one-month period. The restaurant provides vulnerable and isolated people with a warm and friendly place to meet and eat. The meals prepared in this community restaurant were also distributed during our social patrols and to users of our services and facilities in Essonne.

With the help of our volunteers, SIF teams served more than 43,392 meals.

In Lyon, SIF teams and volunteers distributed 3,000 meals in a squat housing unaccompanied minors. A meal was held to celebrate Eid Al Fitr at the Tables du Ramadan and at our centres in Massy, and sweets and snacks were distributed in Saint-Denis and Lyon, enabling the poorest members of the community to spend an enjoyable time together. In addition, 1,368 kilos of dates were distributed in Reunion Island.

Solidarity parcels

Over the month of Ramadan, a total of 13,000 solidarity parcels, prepared by our volunteers and overseen by SIF teams, were distributed to inmates in a number of prisons in France.

These parcels contained dates, soup, cereal bars, cakes, chocolate bars, musk and sanitary towels for female inmates.

This campaign is carried out in conjunction with the prison chaplains and the prison management boards.

Meat parcels

For Eid Al Adha 2024, SIF distributed around 1,725 meat parcels to more than 3,000 vulnerable people in Massy and Saint-Denis.

A meal to celebrate Eid Al Adha was held in Massy, and we handed out gifts and chocolates in Saint-Denis and Lyon.

We also distributed meat parcels to households in difficulty in Reunion Island.

FOCUS ON MOYOTTE

Emergency response to the aftermath of Cyclone Chido

Following Cyclone Chido in December 2024, countless neighbourhoods were flattened, drinking water supply was cut off, and roads destroyed. The vast majority of Mayotte’s inhabitants lost everything, their houses and their belongings.

To help people during this crisis, SIF distributed food kits (rice, flour, lentils, oil, sugar, milk, tinned tomatoes) and hygiene kits (soap, toothpaste, toothbrushes, shampoo, bleach, washing detergent, bin bags and sanitary towels) in the most severely affected areas of Mayotte: Mangaté, Kaweni, Bandrajou, Chiconi, Combani, Koungou and Mamoudzou.

“Arriving on-site after a stopover on Reunion Island, SIF teams immediately made contact with the local authorities and our local partners to organise the distribution campaigns. By bringing in volunteers, we were able to prepare 2,400 kits. These were distributed in the most badly hit neighbourhoods”, Léo, Development Manager.

SIF had already started working in Mayotte earlier in 2024 via a strategic partnership with a local organisation, Le Village d’Eva, which gave rise to the Guichet Unique de la Non-Scolarisation project.



The aim of this ‘one-stop shop’ initiative is to get the many children excluded from the education system into school. If this project remains feasible after the cyclone, the mobile schooling support teams will conduct around 200 ‘street school’ patrols, carrying out teaching activities in different neighbourhoods and introducing children to French and maths.

Through Le Village d’Eva, SIF will also assist families with administrative procedures in order to provide crucial educational support.

Key figures

- **25 tonnes** of aid
- **6,000 beneficiaries** directly and indirectly receiving support from SIF
- **7 settlements** across Mayotte were covered

Many thanks to our volunteers

“ In France, our volunteers are always on hand to support us on our social projects and share their good humour. They are fully involved in helping us successfully carry out our activities, never failing to provide us with their ideas, energy and commitment. In 2024, more than 800 volunteers worked with us on our social activities in France, and we are extremely grateful to each and every one of them. Our heartfelt thanks go out to #TeamSIFbénévole ”



ADVOCACY



ADVOCACY

As SIF's third activity, our advocacy work seeks to influence public policy in France, Europe and around the world in order to increase the impact of our projects on the living conditions of the most vulnerable people. Drawing on our expertise and on issues encountered in the field, our advocacy campaigns ensure that the voices of the people most in need are heard by policymakers and that their fundamental rights are inclusively and unconditionally respected without discrimination.

2024 was marked by a number of political decisions that had a major impact on France's international assistance, such as the drastic cuts to France's international solidarity funding (reduced by 13% in the 2024 Finance Act) and the postponement of the target of allocating 0.7% of gross national income to official development assistance (ODA) from 2025 to 2030. In alignment with the SIF 2022-2027 strategy, we specifically focused on campaigning to improve humanitarian assistance mechanisms, promoting the human right to water and sanitation, and realising the rights of the child.



ADVOCACY

€ **0.6** million

2024 budget



**Amplifying the voices
of the most vulnerable**

Preserving the humanitarian space

In 2025, nearly 307 million people will be in need of humanitarian assistance due to conflicts⁴⁴, violence and climate crises; a figure that is six times higher than ten years ago. Faced with these challenges, SIF is working to defend the right to assistance and protect the humanitarian space, despite the numerous setbacks that occurred in 2024, particularly in Gaza.

SIF called for an immediate ceasefire and unhindered access to humanitarian aid, lobbying the French Ministry for Europe and Foreign Affairs, campaigning via the media, and condemning the situation on the ground during a speech to France's National Council for Development and International Solidarity.

Following our accreditation by the United Nations Economic and Social Council (ECOSOC) in 2023, SIF reaffirmed our commitment at the international level by participating in humanitarian meetings at the United Nations in New York in June. We also attended, as an observer, the International Conference of the Red Cross and Red Crescent, which provided a key opportunity for monitoring global humanitarian priorities and reinforced our partnerships as a committed field practitioner.

This was underlined by our participation in the collective advocacy campaign initiated by Coordination SUD, which included demonstrating in front of the National Assembly alongside numerous other French NGOs in November to influence the vote on the 2025 finance bill. SIF remains committed to conducting influencing and advocacy campaigns: publishing position papers, speaking at events, holding meetings with policymakers, writing newspaper articles and giving interviews.

⁴⁴ Homepage | Humanitarian Action. (s. d.). <https://humanitarianaction.info/>

Campaigning to realise the rights of the child, including in crisis situations

In 2024, SIF remained particularly committed to addressing violations of the rights of the child in humanitarian crises caused by conflicts and disasters. One in five children either live in or have fled from a conflict area and, because of these crises, 225 million children are deprived of education. SIF has stepped up our advocacy to protect these children and ensure they have access to education.

SIF continued to influence French policymakers on education. We took part in the consultation on France's new international education strategy and provided input into the AFD's education sector roadmap. In March, SIF participated in the Coalition Education online event entitled "Les champions de l'Éducation - la continuité éducative en situation de crise" (Education Champions - educational continuity in crisis situations). We presented a school disaster risk management project being implemented in Madagascar to the event attendees, who included the AFD, French Ministry for Europe and Foreign Affairs, the French Ministry of Education, and local partners.

In April, SIF contributed to UNICEF's global consultations on "Partnering for children in the climate crisis", sharing experiences from our Syria, Pakistan, Madagascar, Kenya and Somalia field offices on the impact of the climate crisis on children, and helping improve the response of UNICEF and its partners.

In November, prior to the ceasefire, the SIF team in Lebanon launched an awareness-raising campaign on the impact of conflict on children's mental health, particularly displaced children and those forced to drop out of school. The children expressed their distress and anxiety through drawings. A position paper and accompanying video were disseminated to the French Ministry for Europe and Foreign Affairs and to aid agencies in Lebanon. The campaign aimed to raise awareness of these impacts and to call for an increased focus on child protection and education in the humanitarian response in Lebanon.

**For more information,
please scan the QR code**



Leaving no-one behind when providing access to the right to water, sanitation and hygiene

Although the United Nations has recognised access to water and sanitation as a human right, there are still 2.2 billion people who lack access to drinking water and 3.5 billion people without toilets. Each year, more than 842,000 people in the world die from diarrhoea caused by unsafe drinking water and a lack of sanitation and hygiene. This is why SIF conducts advocacy campaigns both in France and abroad to accelerate the realisation of this right.

SIF was involved in the World Water Forum preparatory process, both as a member of the 'Water for agriculture and food' coordination group and as co-coordinator of the session on revitalising irrigation schemes to address climate challenges. At this session, we presented an irrigation channel rehabilitation project in Syria. In addition, SIF organised three roundtables on the impact of waste on post-disaster services, integrated and women-centred water resources management, and a discussion between French and Kazakhstani civil society organisations in preparation for the One Water Summit (OWS) (see below).

In 2024, SIF published our position paper entitled "Comment l'eau nous nourrit ?" (How does water feed us?), highlighting the link between the right to water and the right to food. This paper was disseminated during a speech at the 'Water and soil: crucial issues in international negotiations' seminar held at the Académie du Climat in Paris in October, which focused on the important role played by water on food security, gender equality and social cohesion.

Highly invested in the OWS process, SIF was the only French NGO to attend the summit in Riyadh in December. The aim of the OWS, co-chaired by France, Kazakhstan, Saudi Arabia, and the World Bank, was to act as an incubator for solutions to the global water crisis in preparation for the next UN Water Conference in 2026.

SIF, with the NGOs of Coalition Eau, expressed concern at the lack of political commitment and the failure to address water-related humanitarian crises. This advocacy was a success as our recommendations were included in the opening address made by the French President, E. Macron, who stressed the severity of the water crisis and emphasised that when considering "access and management, water should be deemed a common good", while also reiterating France's commitment to water in humanitarian crises. A key meeting took place with the United Nations special envoy, Retno Marsudi.

Strengthening our commitment to international climate and environmental processes

SIF continued our efforts to protect the environment in line with our 2022-2027 strategic plan, which includes respect for the environment as one of its three pillars. We followed up on our commitments to the Réseau Environnement Humanitaire and implemented our environmental policy.

As an accredited organisation of the United Nations Framework Convention on Climate Change (UNFCCC), SIF participated in COP29 in Baku, Azerbaijan. We jointly organised an event on internal displacement and adaptation to climate change during conflicts, at which the head of our Kenya/Somalia field office presented the triple nexus approach implemented in Somalia. Our involvement enabled us to share our advocacy messages and recommendations on texts with the negotiators, and to strengthen ties with our partners. For the first time ever, SIF also took part in the COP29 preparatory meetings held in Bonn in June to plan for these negotiations.

Furthermore, immediately after the OWS, SIF attended COP16 of the United Nations Convention to Combat Desertification (UNCCD), which is separate from the climate COP and focuses on droughts and land degradation. At this session, France was recognised as an affected country, thereby highlighting the pressing need to speed up land restoration and ecosystem resilience efforts.

For more information,
please scan the QR code



Focus on Advocacy

Displacement caused by disasters and climate change

In 2024, SIF remained committed to tackling internal displacement. There were 75.9 million internally displaced people around the world in 2023. This figure, the highest ever recorded, reflects the protracted nature of displacement and the failure to provide sustainable solutions.

In January, SIF took part in the Global Forum on Migration and Development, an international process chaired by France that addresses challenges relating to migration and development. Not only did we share our recommendations on the theme of the impact of climate change on human mobility, but we also helped coordinate the involvement of international civil society and organised roundtables on climate change, human rights and displacement.

In June, SIF published a position paper on the link between internal displacement, disasters and the impacts of climate change in relation to our projects in Somalia, Madagascar and Pakistan.

This document provides a detailed assessment of the impacts of internal displacement on the most vulnerable, describes our interventions, and then proposes recommendations to improve and accelerate the response. Internal displacement disproportionately affects the most vulnerable people and endangers all human rights. This paper supplements our first position paper on



internal displacement, which calls for immediate action to prevent and respond to this displacement and find sustainable solutions.

In November, SIF was invited to speak at the “Personnes déplacées, réfugiés et climat : enjeux humanitaires” (IDPs, refugees and climate: humanitarian challenges) conference organised by Triangle Génération Humanitaire (TGH) to present our projects in Somalia and share our recommendations.



Key figures

- **1 internal study** on internal displacement, disasters and climate change in relation to our field projects in three countries (Somalia, Madagascar, Pakistan)
- **1 position paper** Disasters, climate change and displacement: challenges and recommendations. Focus on Madagascar, Somalia and Pakistan
- **3 international events** attended to disseminate the position paper

Shukri Abdisalan Mohamed,
55 years old, farmer and mother, Somalia

“We were farmers in our original home. We moved here about 30 years ago. We had enough farm crops stored to provide for the family for two years. The devastating drought and constant lack of rain have affected our source of income, forcing us to move into urban camps”



FINANCIAL REPORT

“ Responsible management to address humanitarian and climate challenges ”

In 2024, a year when humanitarian and social needs increased both in France and around the world, and during which the number of climate and humanitarian crises continued to grow, Secours Islamique France (SIF) has been able to adapt our response to effectively address emergencies.

We ensured that spending on aid for the most vulnerable remained high (€45.7 million compared to €52.3 million in 2023, the slight difference is due to the highly unstable Syrian exchange rate in 2023), through the responsible use of our allocated funding and project reserve, which were used exclusively to help the communities assisted.

Despite a reduction in grants and financial contributions (€9.5 million compared to €27.8 million in 2023, a difference that also needs to be viewed in the context of fluctuating exchange rates), our overall funding was boosted by a significant increase in private donations, which came to €50.6 million compared to €47.3 million in 2023 and clearly demonstrates the solidarity of our donors and their unwavering trust in our work.

To effectively carry out our social programmes in France, SIF has three local offices, located in Saint-Denis, Massy and Lyon. At the end of 2019, we acquired premises for a fourth office in Marseille, which is yet to be opened.

Abroad, SIF carry out our projects through 15 field offices, which are managed through branch

accounting and incorporated into the head office accounts after validation. We also work in 7 other countries through local partners.

External audits & financial transparency

The statutory auditor Baker Tilly presented their report at the General Assembly of 28th June 2025⁴⁵, whereby they certified our 2024 accounts without qualification. This financial report, as well as the annual accounts for the year up to 31st December 2024, were submitted for approval at this same GA meeting following their certification by Baker Tilly.

As part of our commitment to rigorous and transparent management, we are continuing to improve our internal and external audit and evaluation processes. These initiatives are aligned with the commitments made under the Don en Confiance label, whose audit scope covers SIF, DOTASIF and SCI SIFHABITAT (see the 'Subsidiaries and Affiliates' section on page 43).

To ensure the clarity of the financial information provided and to comply with the legal set-up of our associated entities, SIF has opted not to consolidate its accounts. This helps clearly differentiate between the assets of each entity, such as those irrevocably transferred to DOTASIF. As part of our ongoing commitment to transparency, the accounts and reports of all SIF entities are available on the SIF website: www.secours-islamique.org.

⁴⁵ The GA of 24/06/2023 appointed Baker Tilly, 16 rue Monceau, 75008 Paris as statutory auditor for SIF and our two associated entities: DOTASIF and SCI SIFHABITAT (ex. SCI SIFMASSY)

Expenditure 2024

The following table shows the expenditure section of the 2024 income statement by source and function (CROD) from the annual accounts.

	FINANCIAL YEAR 2024		FINANCIAL YEAR 2023	
	TOTAL	From funds raised from the public	TOTAL	From funds raised from the public
EXPENDITURE BY FUNCTION in €K				
1 - SOCIAL ACTIVITIES	45,731	32,952	52,256	25,444
1.1 Conducted in France				
- Actions implemented directly by SIF	3,305	2,084	2,809	1,751
- Payments to a central agency or to other organisations working in France				
1.2 Conducted abroad				
- Actions implemented directly by SIF	41,750	30,201	48,822	23,068
- Payments to a central agency or to other organisations working abroad				
1.3 Advocacy	676	667	625	625
2 - FUNDRAISING EXPENSES	4,371	4,371	4,265	4,265
2.1 Public fundraising actions	4,184	4,184	4,074	4,074
2.2 Other fundraising actions	186	186	191	191
3 - OPERATING COSTS	1,694	154	1,693	815
4 - PROVISIONS AND DEPRECIATION	2,519	2,389	2,624	477
5 - INCOME TAX	457		123	
6 - ALLOCATED FUNDS CARRIED OVER AT YEAR-END	26,416	23,417	21,401	19,135
TOTAL	81,188	63,282	82,361	50,135
SURPLUS OR DEFICIT	- 606	2,212	3,027	5,154

The CROD shows SIF's expenditure and costs broken down by function to detail how we have used our funding. Total expenditure for 2024 is €81.2 million.

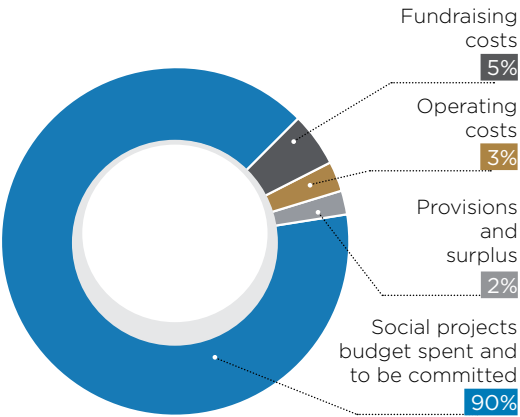
Income 2024

Income is recorded here in accordance with the rules set out in CROD (income statement by source and function), which are clearer than those of the income statement:

	FINANCIAL YEAR 2024		FINANCIAL YEAR 2023	
	TOTAL	From funds raised from the public	TOTAL	From funds raised from the public
INCOME BY SOURCE in €K				
1 - INCOME LINKED TO PUBLIC DONATIONS	51,988	51,988	47,329	47,329
1.1 Unconditional contributions	1	1	2	2
1.2 Donations, bequests and sponsorship		-		
- Individual gifts	50,562	50,562	47,327	47,327
- Bequests, donations and life insurance	42	42	-	-
- Sponsorship	-	-	-	-
1.3 Other income linked to public donations	1,384	1,384	-	-
2 - INCOME NOT LINKED TO PUBLIC DONATIONS	8,956		26,542	
2.1 Conditional contributions	-		-	
2.2 Corporate sponsorship	-		74	
2.3 Unconditional financial contributions	6,256		24,719	
2.4 Other income not linked to public donations	2,701		1,750	
3 - GRANTS AND OTHER STATE SUBSIDIES	3,220		3,084	
4 - REVERSAL OF PROVISIONS AND DEPRECIATION	2,648	2,592	355	355
5 - UTILISATION OF ALLOCATED FUNDS FROM PREVIOUS PERIODS	13,769	10,914	8,079	7,605
TOTAL	80,582	65,495	85,389	55,289

SIF's new income amounted to €64.2 million for 2024.

Breakdown of 2024 expenditure

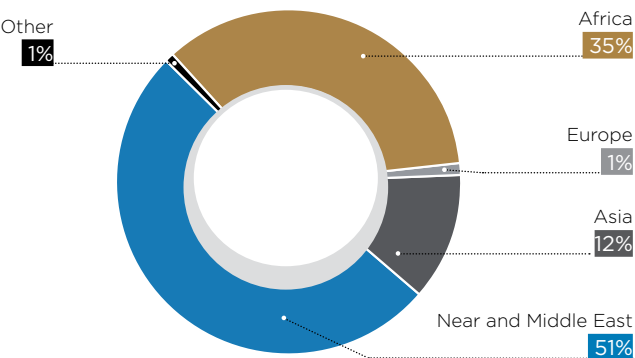


90% was allocated to implementing social projects: 57% of this was spent in 2024 and 33% has been committed (allocated funds for which SIF no longer pays operating or fundraising costs. The majority pertain to funding received at the end of the financial year and which could not be allocated during that year).

- 5% was used for fundraising.
- 3% was spent on operating costs.
- 2% was for provisions and surplus for the period (for surplus, please see the surplus section on page 41).

The total amount spent in 2024, namely 52 million euros, is made up of project costs (57%), fundraising costs (5%) and operating costs (2%).

Social projects



Spending on social projects decreased (-13%), falling from €52.3 million in 2023 to €45.7 million in 2024, a difference that should be viewed in the context of fluctuating exchange rates in 2023. SIF continued to conduct projects around the world in 2024 through our 15 active field offices. We also worked through a number of local partnerships. In France, there was a steady 18% rise in spending on social projects compared to 2023. SIF’s External Relations and Advocacy team continued to conduct awareness-raising and advocacy campaigns that were fully integrated into our social projects.

For these three social project components — international, France and advocacy — the expenditure listed includes project support costs, which are allocated in proportion to the amounts spent on the programmes conducted in 2024. These costs include head office staff working on the projects, as well as logistics costs, project set-up, monitoring and evaluation expenses and the bank transfer costs incurred on our humanitarian programmes, etc.

Fundraising costs

These mainly relate to public fundraising actions, the aim of which is to expand the number of donors and maintain donor loyalty to ensure our social programmes are sustainably supported.

In 2024, a number of information campaigns were carried out to raise public awareness of what we do and showcase the tangible impact of donations. The related expenditure includes the costs of fundraising appeals (management, supporting materials, fairs, radio spots, etc.), and of producing communication tools.

Operating costs

These include the costs of running the SIF offices, such as administration, accounting and IT, as well as overhead costs, which include rent and insurance. These operating costs remained stable compared to 2023.

Voluntary contributions in kind

For the 2024 financial year, SIF again received donations in kind, although fewer than in 2023. However, we also received valuable support from our volunteers, which has also been calculated:

ASSESSMENT OF VOLUNTARY CONTRIBUTIONS IN KIND			
Social projects	€246 K	Volunteering	€210 K
Fundraising costs	€0	Benefits in kind	€0
Operating costs and other expenses	€0	Donations in kind	€36 K
Total	€246 K	Total	€246 K

The social project-related expenditure corresponds to volunteers' involvement in our projects and to the distribution of donations in kind (Tables du Ramadan Visits in France, etc.).

Income from funds raised from the public

Virtually all of this income is from private donations collected in France from individuals and associations. This funding increased from €47.3 million in 2023 to €50.6 million in 2024, which equates to a significant rise of 7%.

Financial contributions, grants and other public subsidies

The financial contributions received from international donors fell sharply in 2024. However we received larger public subsidies in France. Together, the amount received for these three categories decreased from €27.8 million in 2023 to €9.5 million in 2024. We received substantial financial support for our international programmes from the United Nations, particularly from UNHCR and OCHA for our programmes in Syria, and from the WFP in Pakistan. We also received financial support from the AFD in Madagascar, Mali and Senegal, from CDC in Mali, and the EU for our programmes in Mali and Madagascar.

In France, we received a grant from DDETS 91⁴⁶ for our reception facilities in Massy and from DRIHL 93 for our social patrols. The total amount of these 3 budget categories equates to 21% of all income for 2024, which shows that SIF continues to rely heavily on the generosity of our donors.

Income shortfall or surplus

SIF had a shortfall of -€606K, which equates entirely to the amount allocated and used from the project reserve. Unlike in previous years, the Board did not propose to allocate funds to the free reserve as all available funding had been allocated to directly supporting our social projects. As detailed on page 43, SIF also requested the addition of €7.6 million of Zakat El Maal⁴⁷ donations to the project reserve and the utilisation of €8.2 million from this same project reserve.

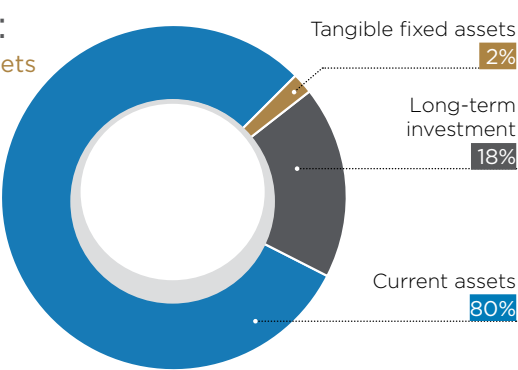
Main simplified balance sheet items

As of 31st December 2024, SIF had a total balance sheet of €107 million, which is higher than the €93 million recorded at the end of 2023. This increase is predominantly due to more funds being available from 2024 income. Consequently, SIF remains in a strong financial position.



⁴⁶ Direction Départementale de la Cohésion Sociale de l'Essonne (DDCS91).
⁴⁷ Obligatory alms given each year by all Muslims as per the solidarity rules established by Islam. The project reserves are not used for Zakat El Maal donations that are 'restricted' to a specific country (France, Palestine) and unutilised, as these are allocated funds.

ASSETS:
2024 net assets



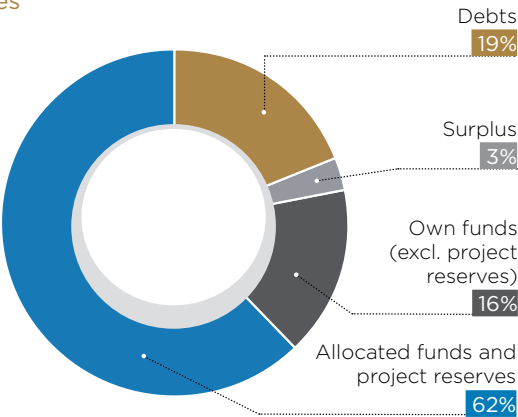
Fixed assets

These include property or investment (tangible assets and long-term investments) that are to remain SIF assets on a long-term basis. These provide us with a solid foundation on which to implement our humanitarian and social projects under the best conditions.

Current assets

These are predominantly cash flow items from our allocated funds and project reserve that are yet to be utilised. To ensure these funds that are not earmarked for use straightaway do not lose their value, SIF has made prudent investments aimed at protecting the capital against inflation and generating a profit, particularly for allocated funds and for the free reserve.

LIABILITIES:
2024 liabilities



Own funds (excl. project reserves)

Predominantly reserves from ‘unutilised’ gifts (see the section on unutilised donations at the end of the period), these have increased, excluding the shortfall, and now stand at €17.1 million compared to €15.5 million as at 31/12/2023. More information on the shortfall is provided on page 37.

Allocated funds and project reserves

There were allocated funds of € 51.7 million as at 31/12/2024, compared to a total of €39.1 million on 31/12/2023. Part of this sum, which comes from ‘restricted’ gifts collected in 2024 (see the section on unutilised donations at the end of the period) will be used in 2025 to implement humanitarian and social projects in line with the donors’ wishes. The same applies to the funds held in the project reserve, which amounted to €15.2 million as at 31/12/2024 (see the ‘unrestricted gifts’ paragraph in the same section).

Debts

Closely linked to SIF’s routine operations, these debts rose slightly in 2024 (€20.7 million compared to €18.6 million in 2023). They mainly consist of tax payable and social security debts (owed to social security bodies, etc.), supplier debt, other debts owed mainly to donors and partners, and deferred income.

Unutilised donations at the end of the period

‘Restricted’ gifts

Gifts restricted for use on a specific project, but which have not yet been utilised are recorded as allocated funds and always used in line with the donor’s wishes. These funds are used within the timeframes required to ensure the quality of the projects and no more operating or fundraising costs can be levied on them, in compliance with the commitments undertaken by SIF.

'Unrestricted' gifts

Unutilised 'unrestricted' gifts (specified in ANC regulation 2018-06 as funds not intended for a specific project) can be listed as surplus (profit), then placed in reserve following validation from the Board and approval from the GA:

- > Free reserve for unutilised general funds.
- > Waqf⁴⁸ reserve for Waqf donations not allocated to DOTASIF.
- > Project reserve for unutilised Zakat El Maal donations.

No more operating or fundraising costs will be levied on this project reserve, which is specifically for humanitarian and social projects.

Changes in reporting methods and error corrections

SIF's annual accounts, certified since 2005, are established using current accounting methods in compliance with the applicable regulations and accounting standards. The accounts are presented using a breakdown of income and expenditure that remains the same year on year to enable comparison. In 2024, there were no corrections to accounting errors required in the SIF financial statements to ensure compliance with regulation CRC no. 99-01 and the French accounting standards authority, Autorité des Normes Comptables (ANC), regulation no. 2018-06.

Subsidiaries and affiliates

To structure our activities, SIF has created or bought entities that we undertake to manage with the same standards and requirements of accountability and transparency. All accounts and reports are available online.

DOTASIF

The Secours Islamique France endowment fund, DOTASIF, has been managing the Waqf donations received by SIF since 2010. Each year, all Waqf donations net of expenses are allocated to DOTASIF.

The statutory purpose of DOTASIF is to earn a return on these Waqf donations through risk-free investments (particularly real estate) and then pass this revenue onto SIF⁴⁹ for its social projects. The SIF Board of Directors is responsible for DOTASIF governance and appoints the DOTASIF board members. There is also an expert committee that ensures all investments are properly managed.

Balance Sheet 31/12/24 IS ⁵⁰	Net assets: €6,869 K		Liabilities: €6,869 K	
	Fixed assets: €1,639 K		Endowments from SIF: €6,828 K	
	Income €327 K	Expenditure €327 K	Total €0⁵¹	

SCI SIFHABITAT

SCI SIFINVEST and SIFHABITAT were merged into Société Civile Immobilière SIFHABITAT, previously known as SCI SIF MASSY, over the course of 2023. These three entities, which have the same partners and same corporate purpose, were brought together under one umbrella to simplify the SIF group set-up and optimise management costs.

SIF holds 17,743 of SCI SIFHABITAT's 19,574 shares; the remaining 1,831 shares are held by DOTASIF.

The SCI owns two buildings, one in Massy (10 rue Galvani) and one in Saint-Denis (58 boulevard Ornano), which are occupied by SIF under traditional rental agreements.

This legal set-up enables SIF to safeguard our premises while effectively managing our assets.

⁴⁸ Inalienable donations from which any profit made is used on SIF social and humanitarian projects.

⁴⁹ Net rate of return from rental income; as one of DOTASIF's tenants, SIF provides a significant guarantee of payment.

⁵⁰ Income Statement.

⁵¹ This total is 0 because the net rate of return has already been transferred to SIF (€170K for 2024).

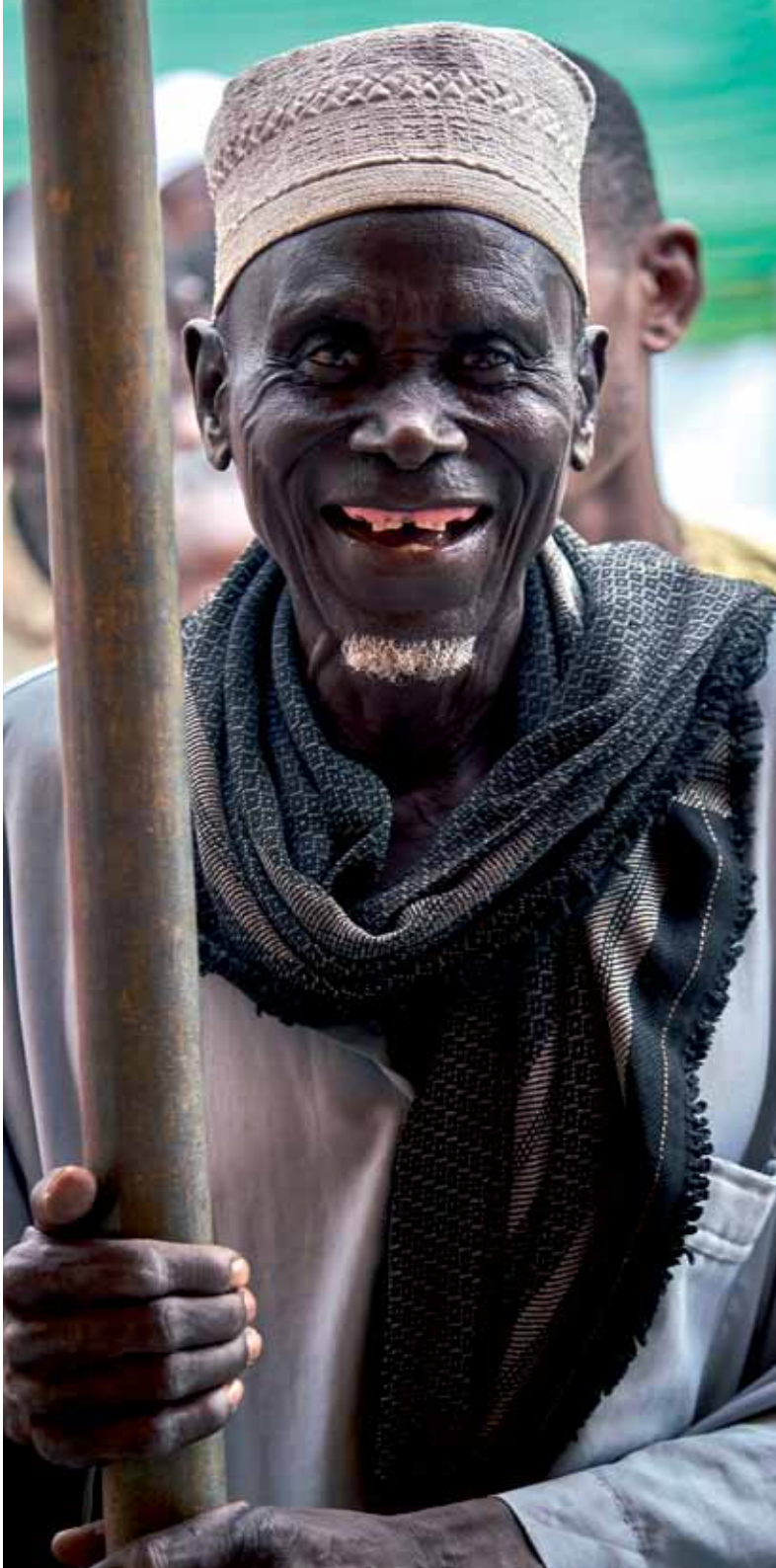
SCI SIFHABITAT also owns a property in Paris's 19th arrondissement, part of which is rented out to a non-profit organisation.

Balance Sheet 31/12/24 IS ⁵³	Net assets: €6,754 K		Liabilities: €6,754 K	
	Fixed assets: €6,580 K		Debts owed to SIF: €4,760 K	
	Income €426 K	Expenditure €496 K	Total -€71 K	

SAS SOLECOINSERT

The simplified joint stock company, Société par Actions Simplifiée SOLECOINSERT, created on 10th January 2019 with capital of €57,000 provided by SIF, has been set up to manage SIF's second-hand clothes shop (Vet'Sol). In accordance with social economy and solidarity legislation, this separate entity makes it possible for our non-profit organisation to develop this business activity within the appropriate legal framework. The profit generated is re-injected into running and developing Vet'Sol, with any surplus used to help finance SIF's humanitarian projects.

Balance Sheet 31/12/24 IS ⁵³	Net assets: €123 K		Liabilities: €123 K	
	Fixed assets: €3 K		Debts owed to SIF: €39	
	Income €148 K	Expenditure €149 K	Total -€1 K	



2025 outlook

More humanitarian and social needs

In 2025, as needs continue to grow exponentially throughout the world, while being compounded by drastic cuts in US humanitarian aid in many countries, SIF will focus on implementing our scheduled humanitarian and social projects both in France and abroad.

We also need to be able to respond to any crises or disasters that may occur. To continue to support the most vulnerable communities following December 2024's Cyclone Chido, SIF also plans to open a new field office in Mayotte.

For Social Mission France, work is set to get underway to open new social structures in Marseille, most likely in 2026.

Abroad, we will adapt our programmes to the situation on the ground. We will also look at how to expand our orphan sponsorship programme in Gaza, the development of which has been on hold since October 2023. We will also open a field office in Egypt to support host communities and Gazan and Sudanese refugees.

To ensure we are able to achieve all of these aims, SIF will focus on developing our institutional financing and funding from private donations in France and abroad.

Progress made on our 2022-2027 objectives

The tools that SIF has been introducing as part of our organisational development process are due to be operational and will improve our effectiveness, enabling us to better support our humanitarian and social projects. They include integrated management software, with roll-out of the purchasing model set to be completed in France and launched in our international

field offices, and a procedures management system, which is to be expanded to include English versions of our operating procedures.

In addition, we are planning to reorganise, and thus optimise, some of our operations. In 2025, we will continue to look at how best to reorganise, or create new, SIF legal entities.

Continuous improvement

Our 2022-2027 strategic paper reflects our commitment to developing and continuously improving the impact of our projects to help the most vulnerable in order to build a solidarity that transcends our differences. We will complete the mid-term review of our strategic plan in the first quarter of 2025.

As part of this commitment, we plan to roll-out a policy on preventing sexual exploitation and abuse in 2025; a policy that is also required by our funders. This will supplement our business and risk management policy, as well as our child safeguarding policy. We also hope to make progress on the Keeping Children Safe standards, for which we have already conducted a positive self-assessment.

We further intend to develop how we assess the impacts of our projects, particularly by focusing on using the impact measures set out in our environmental policy and starting with an annual objective of reducing our carbon footprint by at least 10%.

Acknowledgements

To our donors and volunteers: thank you so much for your contributions, time, energy and involvement. Without your support, we would not be able to continue our work.

To our partners: thank you for supporting our humanitarian work by providing funding and working closely with us to implement projects.

NGO platforms and coordination forums of which SIF is a member

- Association of International Development Agencies (AIDA)
- Butterfly Effect
- Coalition Éducation
- Coalition Eau
- Coordination Humanitaire et Développement (CHD)
- Coordination SUD
- Damascus INGO Forum en Syrie (DINGO)
- Don en confiance
- Fédération des acteurs de la solidarité (FAS)
- Food Security Cluster
- Forum des ONG Internationales au Mali (FONGIM)
- Forum Espace Humanitaire (FEH)
- France Générosités
- Global WASH Cluster
- Groupe Enfance
- Groupe régional de coordination sur l'ODD4-éducation 2030 en Afrique de l'Ouest et du Centre (GRC4-AOC)
- International Council of Voluntary Agencies (ICVA)
- Jordanian INGO Forum (JIF)
- Kenya Humanitarian Partnership Team (KHPT)
- Lebanon Humanitarian INGO Forum (LHIF)
- NGO Coordination Committee Iraq (NCCI)
- Nigeria INGO Forum
- Pakistan Humanitarian Forum (PHF)
- Partenariat Français pour l'Eau (PFE)
- Plateforme des ONG de l'UE au Sénégal (PFONGUE)
- Plateforme des ONG Internationales au Madagascar (PINGOS)
- Réseau Environnement Humanitaire (REH)
- Le Revers de la Médaille
- Somalia NGO Consortium
- Voluntary Organizations in Cooperation in Emergencies (VOICE)
- Wash Road Map

Institutional partners and financial support

- Aide Alimentaire Programmée (AAP)
- Assemblée Nationale
- Association Coup de Coeur
- Association Nationale de Développement des Épiceries Solidaires (ANDES)
- Bundesministerium für wirtschaftliche Zusammenarbeit und Entwicklung (BMZ)
- Crisis and Support Centre of the French Ministry for Europe and Foreign Affairs
- Conseil Général de l'Essonne, Conseil Général de Seine-Saint-Denis
- Conseil Islamique Rhône Alpes - Grande Mosquée de Lyon
- Delegation of the European Union to Mali
- Délégation pour la société civile, l'engagement citoyen et la jeunesse, Ministère de l'Europe et des Affaires étrangères
- Direction départementale de l'emploi, du travail et des solidarités de l'Essonne (DDETS 91)
- Directorate-General for International Cooperation and Development, European Commissions (EuropeAid)
- Directorate-General for European Civil Protection and Humanitarian Aid Operations, European Commission (ECHO)
- Direction Régionale et Interdépartementale de l'hébergement et du logement de la Seine-Saint-Denis (DRIHL 93)
- Federal Ministry for Economic Cooperation and Development (BMZ)
- Fonds de renforcement institutionnel et organisationnel (FRIO), project supported by AFD
- French Embassy in Pakistan
- Global Centre for Climate Mobility
- Global Forum on Migration and Development (GFMD)
- International Organisation for Migration (IOM)

- Ministry of Education, Literacy, and the Promotion of National Languages, Senegal (MENAPLN)
- Ministry of Education, Burkina Faso
- Ministry of Education, Mali
- Ministry of Education, Technical and Vocational Training (MENETP), Madagascar
- Ministry for Europe and Foreign Affairs, France
- Ministry for Women, the Family and Child Protection, Senegal
- Muslim Relief Foundation
- United Nations Children's Fund (UNICEF)
- United Nations Development Programme (UNDP)
- United Nations Educational, Scientific, and Cultural Organisation (UNESCO)
- United Nations High Commissioner for Refugees (UNHCR)
- United Nations Human Settlements Programme (UN Habitat)
- United Nations Office for the Coordination of Humanitarian Affairs (OCHA)
- Ville de Saint Ouen, Ville de Saint-Denis, Ville de Massy
- World Bank
- World Food Programme (WFP)

Operational partners

Action contre la Faim (ACF), ACTED, Action Mopti, Agence du Don en Nature (ADN), Agence Nationale pour la Promotion de l'Emploi des Jeunes (ANPEJ), AGEVAM, Agir Ensemble Contre la Pauvreté, Ain Zaman Social development Association, Al-Azhar University Gaza (AUG), Al Karama, Amec-Ba, Amec-Mo, ANDES Potager de Marianne, An-Najah National University, ARDD, Association régionale des maîtres d'écoles coraniques de Bamako, Association des Maîtres d'Écoles Coraniques de Ségou, Association de santé communautaire (ASACO) de Bankass, Association des relais communautaires pour le développement local de Mopti, Association Musulmane de Bienfaisance, Aumônerie musulmane régionale d'Ile de France, Association Unir Océan indien, Association SANAD pour l'action sociale, the Parents' Associations of the 2,918 schools we support in Morombe, Antananarivo and Ampanihy (Madagascar), ATPIR, Baluchon, Banque Alimentaire de Paris et d'île-de-France, Basmeh & Zeitooneh, Beyaz Eller, BLDA, Brigade régionale des ressources en eau de Tambacounda, Burj Barjane, CARE France, Cart'ONG, Centre Action Enfance Sénégal (CAES), CDC Habitat Adoma, Centre de Formation et d'Alphabétisation des Sourds (CFAS), Centre de Santé Communautaire Bandigara, CMDD, Centre national de lutte contre la cécité (CNLC), Coalition Eau, Coalition Nationale des Associations et ONG en Faveur de l'Enfant (CONAFE), Djenné, Koro, Bankass, Niono, Macina, Bla, Ségou centre, Centre for Mind and Body Medicine (CMBM), Commissariat à la Sécurité Alimentaire (CSA), the rural local authorities of Sebikotane and Kaffrine, the urban local authorities of Mopti, Fatoma, Sio and Socoura Daara, Cheick Moussa Gaye, Conseil supérieur des affaires islamiques (CSAI), Dar El Amal, departments of Dakar, Guédiawaye, Keur Massar, Pikine, Rufisque, Koumpentoum and Kaffrine, Development and Cooperation Association (DCA), Digicel, Direction inter-régionale des services pénitentiaires de Paris (DISP), Direction de la prévention et du contrôle des maladies non transmissibles (DPCM), Direction nationale de l'enseignement fondamental (DNEF) - Mali, districts and local authorities of Bamako, Mopti and Ségou, Dons Solidaires, El Wafa, Environnement et Développement du Mali (ENDA Mali), ESDC (Economic & Social Development Center of Palestine), Farmamundi, Fédération des Associations Islamiques du Burkina Faso (FAIB), Fédération des Banques Alimentaires, Fédération Nationale des Associations des Maîtres d'Écoles Coraniques du Mali (FENAMEC), Fédération nationale des associations d'écoles coraniques du Sénégal (FNAEC), FINADEV, FOFIFA, Friendship International, Groupe Locat Océan indien, Fundación Muslim Relief (FMR), Innovative Humanitarian Solution (IHS), Interlogement 93, GREP, Groupement de Promotion Féminine (GPF) Book Julo de Diagale Sine - Sénégal, Handicap International (HI), Help Chad, Helvetas, Hmo, Institut Islamique Nouroul Maahide, Internal Displacement Monitoring Centre (IDMC), Jafra Foundation for Relief & Youth Development, JP MORGAN, Life Helper Initiatives (LHI), Legal, Le Village d'Eva, Aid, Mairie de l'arrondissement 46 de Ouagadougou, Maison Rose (Unies Vers Elles), Maqsood Welfare Foundation, Medair, Mizee Maore, Mentor Initiative, Ministry of Social Affairs in Lebanon, Ministries of Education in Madagascar, Mali and Senegal, Ministry for Women, Family, Gender and Child Protection - Senegal, Ministry of Faith and Religious Affairs in Mali, Mutuelle du Mandrare, ONG CONCEPT, Organisation Internationale de la Francophonie (OIF), Osthman Consulting, PARC, PARD, PKPU Human initiative, Poupponnière de Bamako, Pragmatic Help Achieving Social Empowerment (PHASE), Qualé, SAMI Foundation, Refettorio, RLS, Samu Social 93, SCI and AICRL, SIAO 91, SIAO 93, SAF ANDES, Fundación Save the Children España, Save the Children Sénégal, SARC, SIAPEP, SMA, SOCADIF, Somali Lifeline Organization (SOLO) SPHP, Sudanese Red Crescent Society (SRCS), Sukaar Foundation, Taliboul Khourane, Terre des Hommes Fondation (TDH), Toplum Kalkınma Derneği (Binaa), UNRWA, Vétérinaires sans Frontières Germany (VSF Germany), Women's Program Association, World Vision France, World Vision Sénégal, YKMI (Yayasan Kemanusiaan Muslim Indonesia), Réseau Action Climat (RAC), Triangle Génération Humanitaire (TGH), Global Center for Climate Mobility, Secours Catholique - Caritas France, ORISA, Première Urgence International, Grassroots Forum on Migration Governance, FFMD

About Us

Founded in 1991, Secours Islamique France (SIF) is a national and international solidarity Non-Governmental Organisation (NGO) that has been working in France and around the world for over 30 years. SIF takes action wherever there are humanitarian and social needs to be addressed.

VISION

SIF believes in a more just and caring world where the basic needs of vulnerable people are met.

MISSION

SIF is committed to reducing poverty and vulnerability in France and around the world, without proselytising or discriminating.

SIF takes action wherever there are humanitarian and social needs that require emergency relief, development programmes, and advocacy campaigns.

ACTIVITIES

Abroad, SIF works mainly in four sectors:

- > Education and child welfare
- > Food security and livelihoods
- > Water, sanitation and hygiene
- > Shelter and accommodation

In France, SIF focuses on three areas to tackle insecurity and exclusion:

- > Social emergency
- > Socio-economic support
- > Professional integration and solidarity economy

Alongside our operational aid activities, SIF has developed advocacy campaigns to inform the public and raise the international community's awareness of the living conditions of the most vulnerable people.

Our messages are primarily disseminated to policymakers to prompt them to find new resolutions to difficult situations.



Values

SIF is built on Islam's human values of solidarity and respect for human dignity, which are our core concerns.

Solidarity

Through our commitment, values and projects, SIF advocates for the creation of a human solidarity that transcends both differences and borders.

We focus on solidarity and sharing with disadvantaged people, and with the organisations that support them, through partnerships.

Respect for human dignity

SIF particularly strives to ensure respect for human dignity and, in all our solidarity initiatives and approaches, we make genuine efforts to learn about and understand the specific social, cultural and religious backgrounds of the people we help.

Furthermore, we work to ensure we can all live well together through an ethics of respect for alterity.

Principles

Ever since our creation, Secours Islamique France has undertaken to respect the principles that form the basis of humanitarian action:

Impartiality & universality

- To help the most vulnerable, fairly and with humanity, regardless of origin, gender, culture, religion, political beliefs or affiliations, etc.;
- To always strive to reach them, even under difficult circumstances;
- To also apply these principles to staff and management boards.

Neutrality & independence

- To abstain from taking sides in conflicts and crises;
- By remaining independent of all political, economic, financial or religious organisations.

Responsibility & transparency

- Towards beneficiaries to provide them with the assistance they need in the most appropriate manner, ensuring the quality of the actions implemented, particularly by considering the longer-term impacts of the aid provided;
- Towards donors by using their donations properly and conscientiously;
- More generally, by adopting a socially and environmentally responsible approach and ensuring compliance with contracts and commitments.

Specific expertise working towards one goal

In order to optimise our impact on the living conditions of the most vulnerable, SIF, with our wealth of diversity and interculturality, seeks to be a leading humanitarian and social actor. In keeping with our Muslim values and as an integral part of the French and international NGO network, SIF is fully committed to:

- Human development;
- Living well together;
- Respect for the environment.

Focusing our work on these 3 pillars, we use a human rights-based approach – and more specifically, a rights of the child-based approach – as well as results-based management. SIF uses our experience and funding, provided mainly by our donors, to conduct swift, relevant and increasingly integrated projects. When implementing these projects, we ensure that we honour humanitarian principles and Muslim ethics when using the donations collected.

Audits and regulations with which SIF complies

- ➊ External auditors for the annual certification of our accounts (published on www.secours-islamique.org).
- ➋ Don en Confiance, a labelling body that audits non-profit organisations and foundations that receive public donations.
SIF has been working under this label since 2011 and is committed to upholding its governance, management and communication principles and rules of conduct.
- ➌ Donors for subsidised programmes.

Governance

The General Assembly (GA)

The GA, SIF's ultimate decision-making body, met twice in 2024: on 22nd June to approve the annual accounts following their unqualified certification by the statutory auditors Baker Tilly – the accounts, report and key information for 2023 can be found on our website; and on 14th December to discuss the mid-term review of our strategic plan.

The GA has four categories of member who adhere to our values.

As of 31st December 2024, these members were:

- 1 founding member - Rachid Lahlou, also our current President – who has been leading SIF since its creation. He has the right to vote on GA matters and is a full member of the Board of Directors.
- Members co-opted from the Board of Directors and who are full members of the GA while they are co-opted.
- Ordinary members appointed by the Board of Directors upon application. They pay fees, have voting rights and are eligible for all posts.
- Potentially, although there are none in place at the moment, members appointed for their outstanding service to SIF. They pay no membership fees, are not eligible to take on GA posts and have no voting rights.

The Board of Directors

The management body under the mandate adopted by the GA, the Board of Directors met seven times in 2024 to discuss strategic issues and approve key documents (forecast budgets and development plans, financial statements, end-of-year accounts, etc.).

At the end of 2024, the Board of Directors had 10 members, with 2 co-opted members still to be appointed. Under its statutes, the Board can have between 9 and 12 members, including the founding member:



- Some members are elected by the GA, one-third of whom are replaced every 3 years in order of length of service: 7 elected members, including 3 at the June 2023 GA.
- The other members, up to a third of the board, are co-opted by the Board of Directors: 2 members were co-opted at the November 2023 board meeting.

Elections are held each time a third of the board is replaced. Following the June 2023 GA, the Board of Directors re-elected Rachid Lahlou as President. The other board members were all re-elected in November 2023.

In addition to his statutory roles, the President oversees SIF External Relations and Advocacy and is the SIF legal representative and spokesperson in all civil acts. He is vested with all the powers required for this, as well as for ensuring the smooth running of SIF. He also manages the Board's Finance Commission. Similarly, in addition to the authority defined in the statutes, the Treasurer is a member of the board's Audit/Evaluation and Finance Commissions, which he manages and co-manages respectively. Given the significant amount of time they spend working on these mandates, and on working for SIF, our President and Treasurer, and the board member appointed Chair of the SIF Ethics Committee, receive remuneration as permitted under current legislation.

Under the SIF statutes, the Board of Directors can delegate authority to ad hoc commissions. To ensure greater effectiveness and expertise, the Board of Directors has created five commissions and one committee for whom the board has drawn up Terms of Reference and appointed their members (a mix of board members and management). These commissions are automatically disbanded the day before the scheduled date of the GA at which a third of the board members are to be replaced.

The Ethics Committee

This committee is in charge of providing ethical advice on issues that may arise on SIF projects. In 2024, the committee also continued to organise seminars for our teams on our social doctrine (values and principles) and our foundations in order to improve understanding of our ethical choices and strategies.

The Finance Commission (COFI)

This Commission reviews and provides advice on financial documents. In 2024, it met on four occasions to facilitate decision-making on financial statements, estimated budgets and annual accounts.

The Audit and Evaluation Commission (COMEC)

Its role is to ensure that the activities carried out are in line with our donors' wishes and to prevent errors, conflict of interest and fraud. The aim is to safeguard the integrity of our assets and resources by conducting audits and evaluations of the programmes being implemented.

The Human Resources Commission

This Commission is chaired by the Secretary General and its members include the HR Director and Executive Director. It oversees staff management and enhances the HR policy based on the principles of fairness and motivation. As part of the budget approval process, the Board of Directors has given this Commission the mandate of approving overall changes and benefits, excluding individual modifications, for all staff and management.



The Image and Reputation Commission

This Commission monitors the perception of our written and visual communication. It can also provide feedback on some of our communication projects.

The Programmes Commission

Created in 2021, this commission works on the operational strategies of the programmes we implement both in France and abroad, focusing particularly on our three-year country strategies.

The Executive Committee

The Executive Director, an employee, is appointed by the Board of Directors based on a proposal from the President. The President then delegates the day-to-day management of SIF to this Executive Director, who works under the President's supervision. The Executive Director chairs the Executive Committee, which is in charge of coordinating operations and implementing the SIF strategy and action plans. Committee members include the heads of five departments (recruited by the Executive Director and at least one board member): International Operations & Programmes, Social Mission France, Communication & Development, Administration & Finance, and Human Resources.

SIF Board Members

SIF Board of Directors as at 31st December 2023



President of the SIF Board of Directors

Rachid Lahlou

Profession: SIF Founding President
Knight of the Legion of Honour



1st Vice-President

Mohamed Ouazza

Profession: Teacher



2nd Vice-President

Hadija Oubrou

Profession: Supervisor in the Social and Education Sector



Secretary General

Moustapha Mbodji

Profession: IT Specialist



Treasurer

Rabeh Fartassi

Profession: Administrative and Financial Director



Board Member

Louise Avon

Profession: Former Diplomat



Board Member

Anne Hery

Profession: Head of Advocacy and Institutional Relations at Handicap International



Board Member

Mounib Saballah

Profession: Pricing Manager



Board Member

Ismael Locate

Profession: Company Manager and Customs Agent



Board Member

Tareq Oubrou

Profession: Imam at the Bordeaux Mosque

To ensure good governance

SIF has its own ethical standards, which are set out in the SIF Charter, our Code of Conduct and Code on Conflict of Interest. We also ensure that our teams are all aware of our zero tolerance approach (to fraud, abuse, etc.), for which we have a whistleblowing procedure, and the principles of voluntary management. We use the cases escalated, and preferably reported, to enhance our team training and improve our tools. Furthermore, we are continuing to implement the following board-approved policies: Security, Risk Management, Bequests & Gifts, Environment, and Child Safeguarding. Each year, we update the mandatory master risk assessment document, as well as an overall risk mapping document, plus one for each country, and supporting action plans.

More specifically, we have rolled out our Child Safeguarding policy in all of our field offices in both France and abroad with the help of around sixty focal points: reinforcing child safeguarding measures, providing briefings and/or training, and raising the awareness of partners and communities, including children, etc.

These documents constitute one part of our internal audit process, set up to monitor our management – externally audited each year by our statutory auditors and at any time by our donors and the Court of Auditors – and the impact of our programmes, which are assessed both internally and externally, especially by our donors. We particularly adhere to the ECHO regulations, through which we are certified as eligible for European Union humanitarian funding over the 2021-2027 period.

Under the Don en Confiance Label (for which SIF received our initial certification in 2011), in addition to his regular annual audit visit, the Don en Confiance auditor attended the GA meetings on 24th June and 14th December, as well as the Board of Director's meeting held on 13th December.

As well as adhering to the Don en Confiance charter, we follow the ethical and transparency criteria defined by Coordination SUD and the Code of Conduct for the International Red Cross and Red Crescent Movement.

SIF also looks after the mutual interests of our associated bodies as part of the regulated agreements verified by the statutory auditor, more information on which can be found in the Financial Report.

This continuous improvement process is enhanced by the work being carried out by the Internal Monitoring and Governance Coordinator and through the development of tools to monitor management and strategic indicators and quality markers.

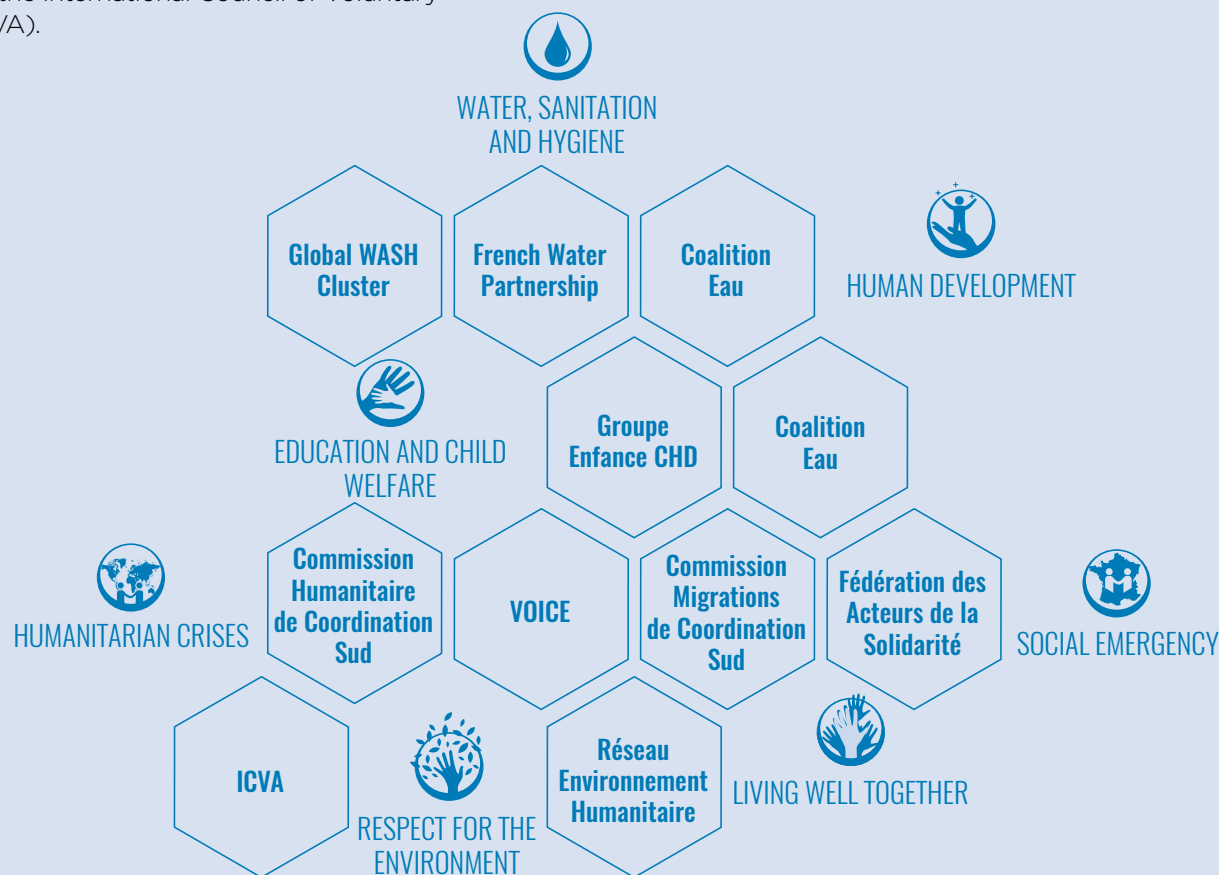
External relations

SIF is a member of a number of solidarity platforms, both in France and abroad. In 2024, SIF remained committed to the governance of these platforms, particularly as members of the Coalition Education steering committee and the management boards of Coordination Humanitaire et Développement, the French Water Partnership and Coordination SUD (up to the end of our mandate in June 2024). We also remained actively involved in work conducted by Coalition Eau and Groupe Enfance, as well as in the humanitarian and migration forums of Coordination SUD and Réseau Environnement Humanitaire. Outside of France, SIF has taken part in activities initiated by Voluntary Organizations in Cooperation in Emergencies (VOICE) and the International Council of Voluntary Agencies (ICVA).

SIF also joined additional networks in 2024, including the Food Security Cluster and WASH Road Map's (WRM) initiative 8 (advocacy and financing).

SIF is a member of:

- International solidarity platforms: Coalition Eau, Coalition Éducation, Coordination Humanitaire et Développement, Groupe Enfance, Coordination SUD, Butterfly Effect, Global WASH Cluster, ICVA, French Water Partnership, Réseau Environnement Humanitaire, VOICE, WRM, Food Security Cluster.
- French platforms: Don en Confiance, Fédération des Acteurs de la Solidarité, France Générosités.







Secours Islamique France
10 rue Galvani 91300 Massy (France)
+33 (0) 1 60 14 14 99
www.secours-islamique.org



SIF is a Don en Confiance-
recognised organisation



Printed on
recycled
paper

